



# PRAKASH

Worldwide

Quality, Reliability, Life



## PERIPHERAL AND CENTRIFUGAL PUMP

# Peripheral and Centrifugal Pump

## Applications

- Domestic Water Supply
- Lawn Sprinkler
- Automobile Washing
- Gardens Water Supply
- Pressure Boosting in Various Fields

## Performance Range

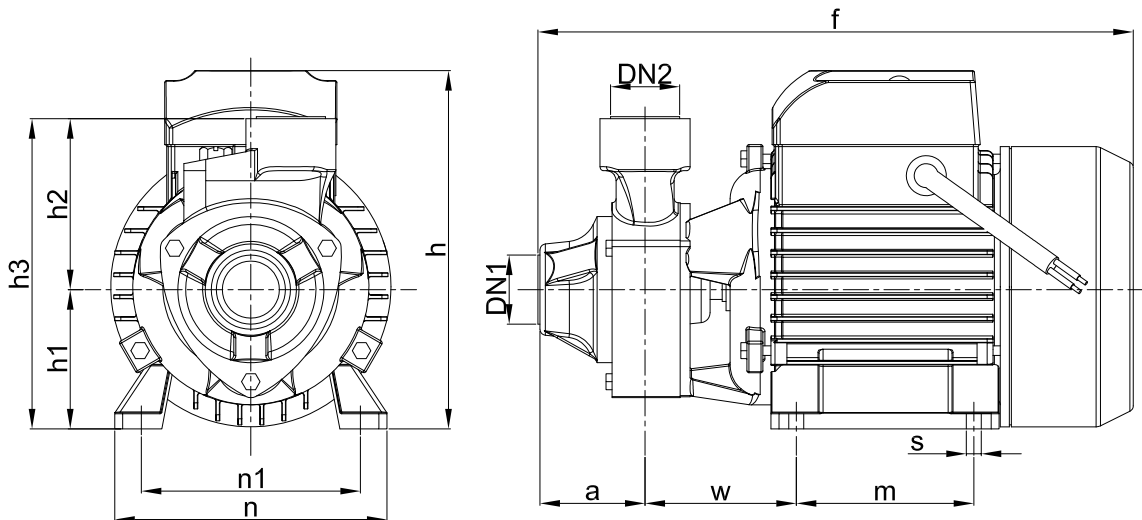
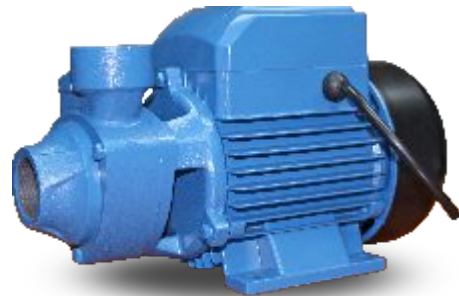
- Flow : 40 LPM to 1200 LPM
- Head : 19m to 40m
- Speed 2900 rpm
- Power 0.37kW – 2.2kW
- 50 Hz

## Application Limits

- Manometric Suction Lift Up to 8m
- Liquid Temperature between 0°C to 90°C
- Ambient Temperature Up to 40°C
- Max. Working Pressure
- 6 Bar for PCP-05, PCP-10 and 10 Bar for PCP-15, PCP-15A, PCP-20A, PCP-30A, PCP-30

## Installation in applications

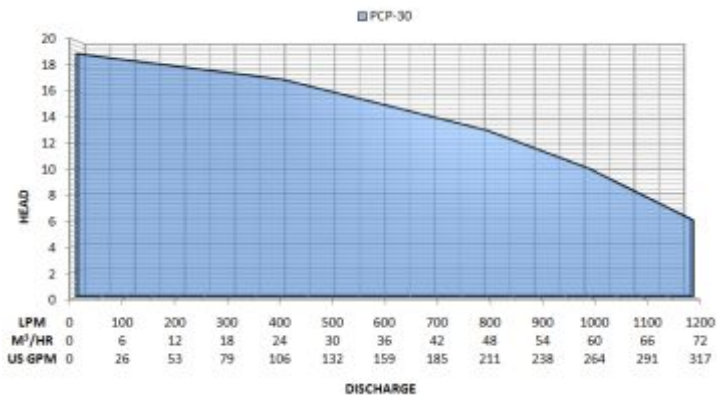
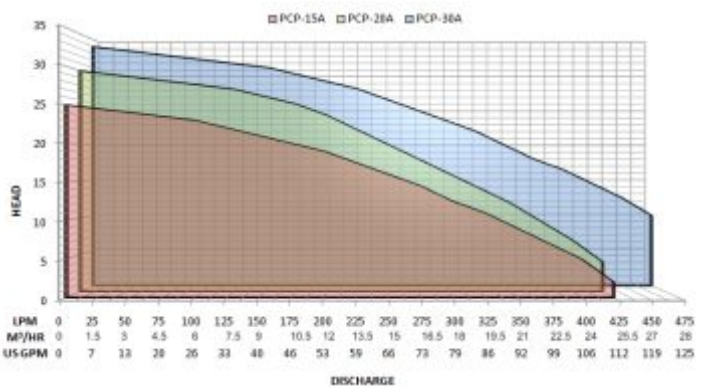
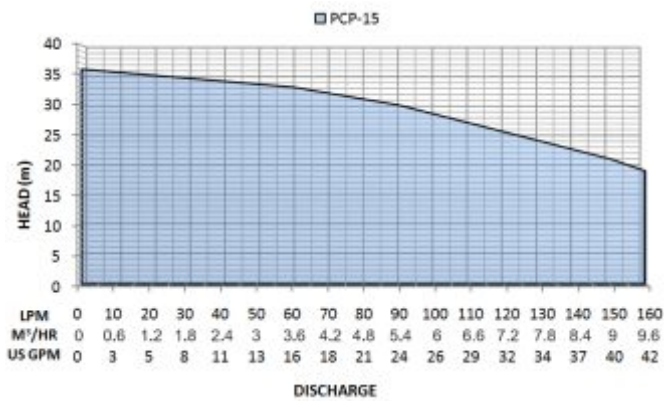
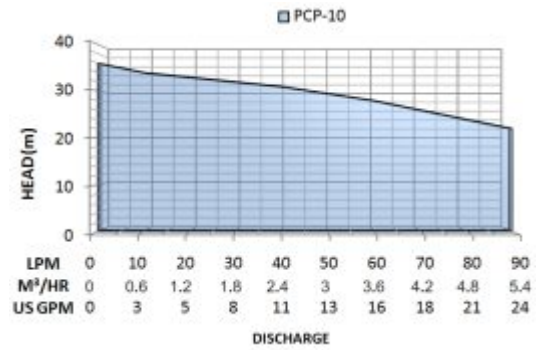
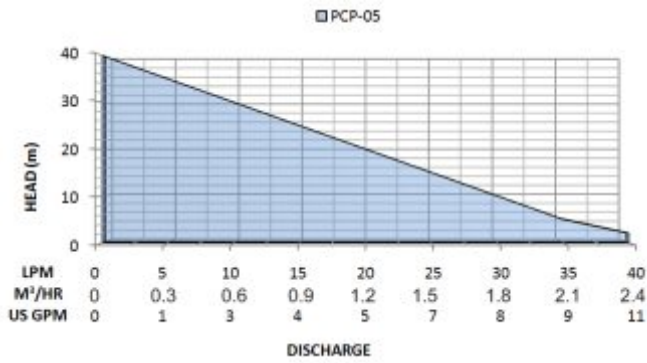
- Suitable for clean water that does not contain abrasive particles and liquids that are not chemically aggressive towards the materials from which the pump is made.
- Thanks for it's reliability, the fact that these pumps are easy to use and very economical, these are ideal for domestic and civil use and in particular for distributing water in combination with small and medium pressure sets, irrigation of gardens and allotment. The pump should be installed in an enclosed environment, or at least sheltered from inclement weather.



MODEL	PORTS		DIMENSIONS IN MM											KG
	DN1	DN2	a	f	h	h1	h2	h3	m	n	n1	w	s	
PCP-05	1" -1"		42	245	152	63	75	138	80	120	100	55	7	5.3



## Hydraulic Performance Curve



## Hydraulic Performance Curve

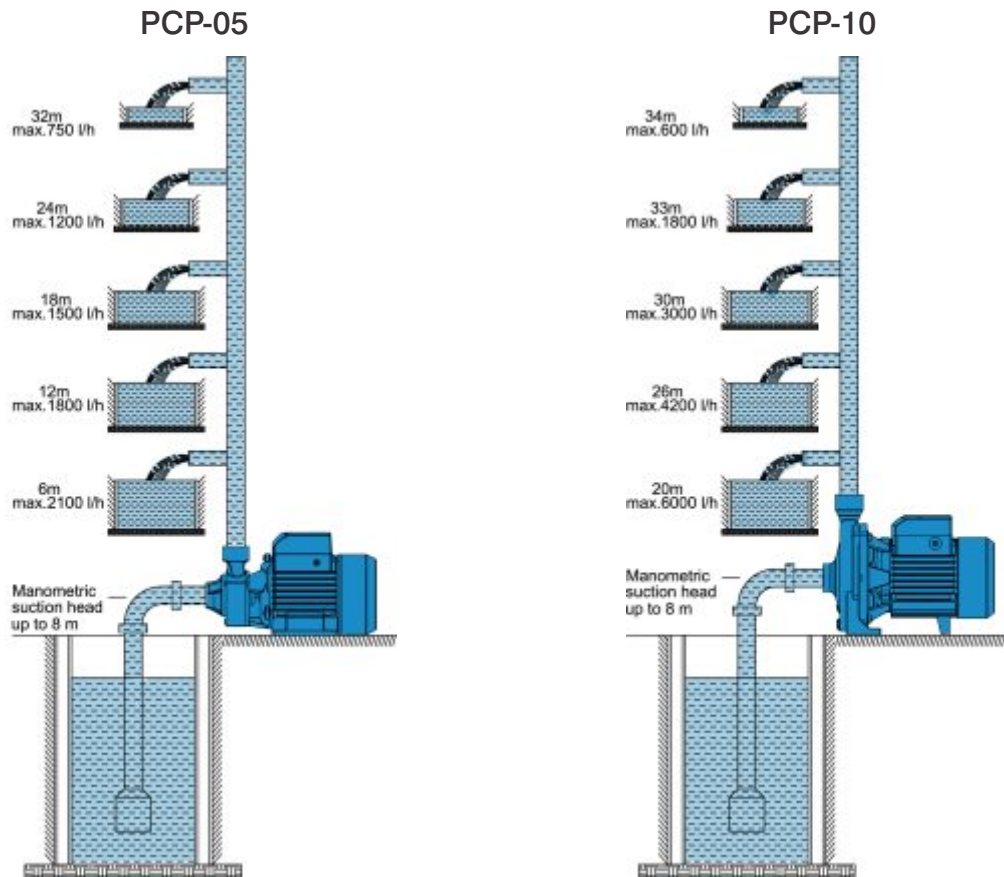
Pressure		Diameter of Nozzle (inches*) mm								
		5/64"	5/32"	1/4"	5/16"	25/64"	15/32"	5/8"	25/32"	1"
kpa	psi	2	4	6	8	10	12	16	20	25
200	29	0.06	0.25	0.56	1.01	1.57	2.26	4.02	6.29	9.82
300	43	0.08	0.31	0.69	1.23	1.93	2.77	4.93	7.70	12.03
400	58	0.09	0.36	0.80	1.42	2.22	3.20	5.69	8.89	13.89
500	73	0.10	0.40	0.89	1.59	2.48	3.58	6.36	9.94	15.53
600	87	0.11	0.43	0.98	1.74	2.72	3.92	6.97	10.89	17.02
700	102	0.12	0.47	1.06	1.88	2.94	4.23	7.53	11.76	18.38
800	116	0.12	0.50	1.13	2.01	3.14	4.53	8.05	12.58	19.65
900	131	0.13	0.53	1.20	2.13	3.33	4.80	8.54	13.34	20.84
1000	145	0.14	0.56	1.26	2.25	3.52	5.06	9.00	14.06	21.97

## Lawn sprinkler application and Irrigation





## Domestic Application



## What Pump Do I Need?

<b>Application</b>	Domestic	PCP 05 / PCP 10
<b>Application</b>	Water transfer Irrigation Household water supply Other	PCP 15 / PCP 15A / PCP 20A/ PCP 30/ PCP 30A
<b>Water Source</b>	Above ground tank Underground tank River Dam Other	
<b>Power Supply</b>	240 V Single phase (50Hz)	
<b>Water Requirement</b>	<b>Household</b> House only House and garden Showers Sprinklers Evaporative air-conditioned connected <b>Irrigation</b> Sprinkler Automatic operation Manual operation <b>Water Transfer</b> Lift from pump(A) to point of discharge(B)	



Worldwide

## Prakash Pump

Naroda Road, Ahmedabad-380025. Gujarat, India

Phone : +919925249371 | Email:info@prakashpump.com | www.prakashpump.com

UAE : 00971 50 6731283 | 00971 37222733

Oman : 00968 95690021 | 00968 26883982



Scan QR Code to Get  
Quotation by Email



Scan QR Code to Get  
Quotation by SMS



Scan QR Code to  
Download e-Catalogue

