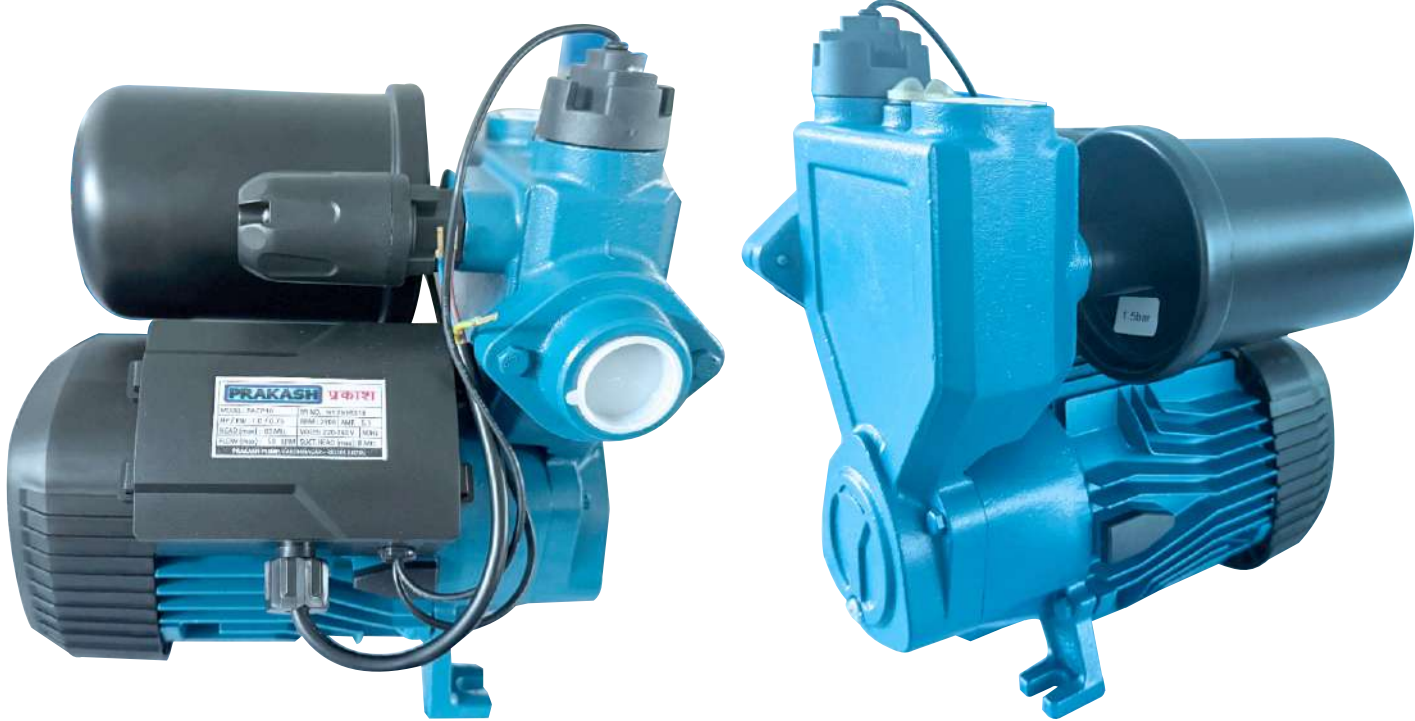


# PRAKASH

Quality, Reliability, Life

## Automatic Centrifugal Pump



[www.prakashpump.com](http://www.prakashpump.com)

## Applications

- Hot & cold booster pump
- Shallow well, garden irrigation
- Smart domestic installation
- Pressure boiler feeding for washing
- Pressurization of industrial plants
- Small autoclaves
- Transfer of liquids

## Performance Range

- Flow: up to 50 LPM
- Head: up to 65 meters
- Speed: 2900 RPM
- Power: up to 0.75Kw

## Applications limits

- Suction: up to 8m (Self-Priming)
- Liquid Temperature: Up to 90°C
- Ambient temperature: up to 40°C
- Max. working pressure: 8 Bar
- Liquid PH value: 6-8

## Motor Details

- 2 pole Induction Motor IE2
- Protection: IPX4
- Insulation class: B
- Voltage: 220-240v, 50Hz
- Thermal protection: in-built

## Material of Contraction (MOC)

<b>Pump Body</b>	Cast iron	<b>Impeller</b>	Brass
<b>Motor bracket</b>	Cast iron	<b>Mechanical Seal</b>	Ceramic-graphite-NBR

## Feature

- Suitable for use with clean water, or non-aggressive liquids only, without sand or other solid impurities.
- 3-second time delay of pump start after plugging into the socket to avoid potential danger caused by electric sparks
- Automatic 10-second operation every 72 hours for anti-block protection in case of no use for long time
- According the feedback from flow sensor pressure Switch to control start, stop and dry-running protection Etc.

## Installation & Use

PRAKASH as the professional manufacturer, we would like to provide you hot and cold-water booster pump. And we will offer you the best after-sale service and timely delivery. Pm series hot and cold-water booster pump belongs to the single-phase self-priming peripheral pump category, is a best seller pump in the global market. It is our patent design pump, attractive appearance, compact and very silent. The pump is assembled with very resistant and durable materials which is able to guarantee a very high solidity and the almost total absence of wear over time. Pumps should be installed in a covered area, protected against the weather.

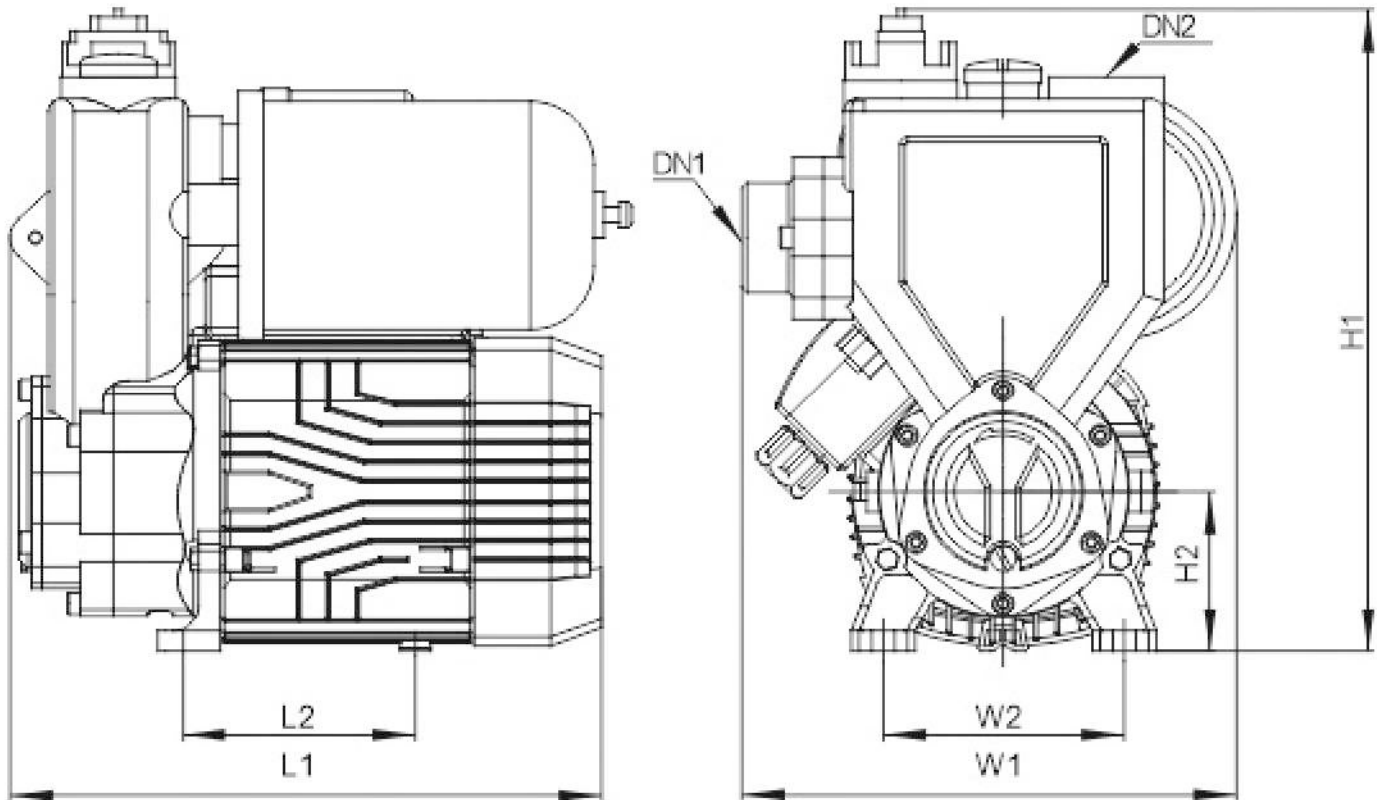
## Pump Selection Chart

Model	Power		Voltage (50Hz)	Rated Speed (RPM)	Inlet/ outlet	Max. Flow (LPM)	Max. Head (meter)	Pressure tank(Ltr)	Net Weight (Kg)	Max. Suction (m)
	KW	HP								
PACP05	0.37	0.5	220-240V	2900	1" x 1"	40	40	1	8	8
PACP075	0.55	0.75				50	55	2	11.3	
PACP10	0.75	1.0				50	65	3	12.5	

# Automatic Centrifugal Pump

**PRAKASH**

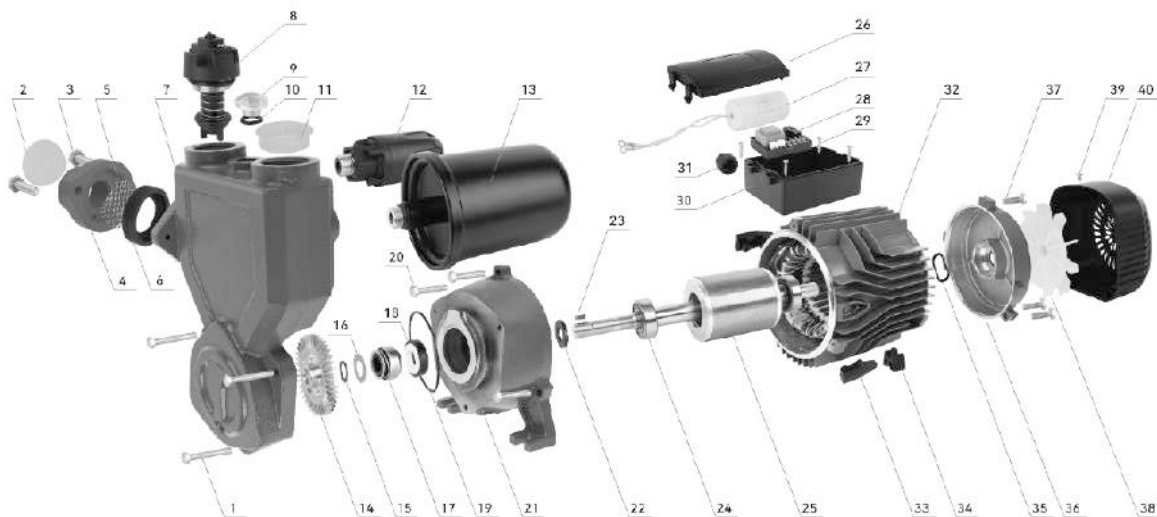
## G.A Drawing



## Pump Dimension in mm

Model	DN1	DN2	L1	L2	W1	W2	H1	H2
PACP05	1"	1"	233	86	190	96	226	63
PACP075	1"	1"	289	110	210	112	274	76
PACP10	1"	1"	289	110	210	112	274	76

## Exploded View



# Automatic Centrifugal Pump

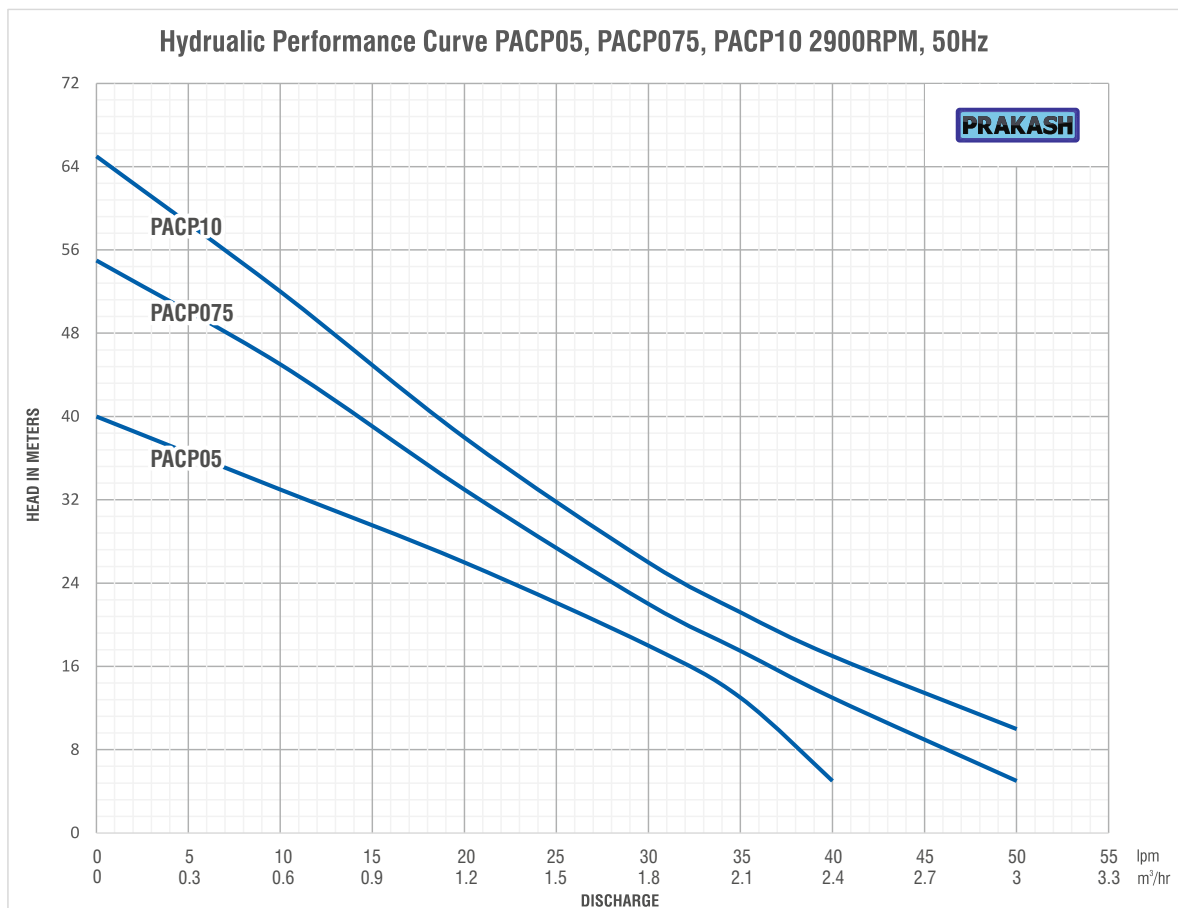


## Material of Construction (MOC)

ITEM NO.	PART NAME	ITEM NO.	PART NAME	ITEM NO.	PART NAME
1	Bolt	15	Snap Ring	29	Screw
2	Plastic Cover	16	Plain Washer	30	Terminal Box Base
3	Bolt	17	Mech. Seal Stationary Ring	31	Cable Holder
4	Flange	18	Mech. Seal Rotary Ring	32	Stator
5	Stainless Strainer	19	O Ring	33	LOGO Block
6	Rubber Washer	20	Bolt	34	Supporting Foot
7	Pump Body	21	Motor Front Bracket	35	Spring Washer
8	Flow Switch	22	Splash Guard	36	Motor End Cover
9	Filling Plug	23	Shaft key	37	Bolt
10	O Ring	24	Bearing	38	Fan
11	Plastic Cover	25	Rotor with Shaft	39	Screw
12	Pressure Switch	26	Terminal Box Cover	40	Fan Cover
13	Pressure Tank	27	Capacitor		
14	Impeller	28	Electrical Board		

## Performance Chart

Model	Power		Q	US GPM	0	2.6	5.3	8	9.2	10.5	13.2
	KW	HP		M <sup>3</sup> /H	0	0.6	1.2	1.8	2.1	2.4	3
				LPM	0	10	20	30	35	40	50
PACP05	0.37	0.5		40	33	26	18	13	5		
PACP075	0.55	0.75		55	45	33	22	17	13	5	
PACP10	0.75	1.0		65	52	38	26	21	17	10	



# PRAKASH

Office in India

## PRAKASH PUMP

Survey No. 479, Opp. Supreme Estate-1, Zak Kadadara Road, Vill. - Kadadara,  
Tal. Dahegam, Gandhinagar, Gujarat 382305 INDIA E-mail: [sale@prakashpump.com](mailto:sale@prakashpump.com)

Distributor Office for Middle East

## PRAKASH PUMP EST

P.O. Box: 20973 Industrial Area Al Ain (United Arab Emirates)  
Tel.: +971 3 7222733 Mob.: +971 50 6731283 E-mail: [sale@prakashpump.com](mailto:sale@prakashpump.com)

Distributor Office for Oman

## GLOBAL EQUIPMENT MATERIAL CO. LLC

P.O. Box. 227, Postal Code: 320 Nakhal Road, Barka (Sultanate of Oman)  
Tel.: +968 26883982 Mob.: +968 94584686 E-mail: [oman@prakashpump.com](mailto:oman@prakashpump.com)

Distributor Office for Saudi Arabia

## PRAKASH PUMP INDUSTRY

P.O. Box 14327, Bldg. 3616, Al Marwah 6447, Al Mishaal Riyadh City, (Kingdoms of Saudi Arabia)  
Sulay Exit 18. Mobile: +966 539811109 Email: [saudi@prakashpump.com](mailto:saudi@prakashpump.com)

Factory Address

## PANJI ENGINEERING PVT LTD

Survey No. 479, Opp. Supreme Estate-1, Zak Kadadara Road, Vill. - Kadadara,  
Tal. Dahegam, Gandhinagar, Gujarat 382305 INDIA E-mail: [sale@prakashpump.com](mailto:sale@prakashpump.com)



To get  
Quotation by email



## PRAKASHPUMPEST

These images given are only for illustration purpose  
for further details contact the sales team at  
[sale@prakashpump.com](mailto:sale@prakashpump.com) / [oman@prakashpump.com](mailto:oman@prakashpump.com)  
/ [saudi@prakashpump.com](mailto:saudi@prakashpump.com)



To get  
Website

