

# PRAKASH

Quality, Reliability, Life

## Sewage Cutter Pump



[www.prakashpump.com](http://www.prakashpump.com)

## Applications

- Scum pumping at waste water treatment plant
- Municipal projects
- Industrial packaged pump station
- Residential building & Domestic application (special for kitchen wastage)
- Pumping agricultural manure (dairy, hog and poultry)

## Application Limits

- Max. liquid temperature : up to 40 °C
- Max. ambient temperature : up to 40 °C
- Max. operating depth : up to 8 m
- Max. density of trans medium is 1.2x103kg/m<sup>3</sup>
- Viscosity of trans medium is 7x10<sup>-7</sup> – 23x10<sup>-6</sup> m<sup>2</sup>/s
- Liquid PH Value : 4 to 10

## Feature and Benefits

Sewage cutter pump is design to handle large concentration of solids and/or tougher solids that conventional sewage pumps cannot handle. It provides clog-free operation by macerating those solids that might clog other types of submersible pumps.

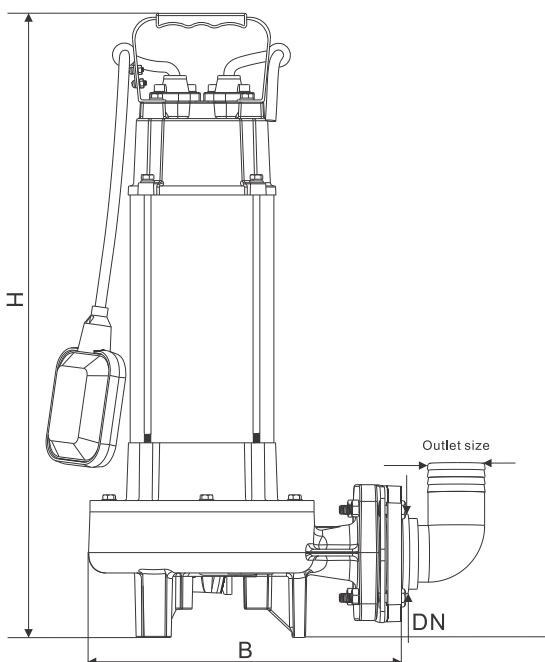
## Installation & Use

Submersible pump with cutter is an ideal machine for draining sewage. A high-speed rotating cutter is assembled at the inlet hole of the pump, make it easy to cut off long-fiber and firm sundries contained in the sewage, so as to avoid the impeller is blocked by the entanglement. The protector in the motor can automatically cut off the power when it overheated or overloaded, thus guarantee the security and reliability of pump's running even in the atrocious environment.

## Pump Selection Chart

Model	Power		Voltage /50Hz	Rated Speed (RPM)	Outlet (Inch)	Guide Rail	Maximum		Net Weight (Kg)
	KW	HP					Head (Meter)	Flow (m3/h)	
PSCP18-18-0.75F	0.75	1.0	220-240v	2900	2"	40-40	18	18	20
PSCP18-18-0.75T	0.75	1.0	380-420v	2900	2"	40-40	18	18	20
PSCP20-18-1.1F	1.1	1.5	220-240v	2900	2"	40-40	20	18	21.2
PSCP20-18-1.1T	1.1	1.5	380-420v	2900	2"	40-40	20	18	21.2
PSCP22-18-1.5F	1.5	2.0	220-240v	2900	2"	50-50	22	18	28.5
PSCP22-18-1.5T	1.5	2.0	380-420v	2900	2"	50-50	22	18	28.5

## G.A Drawing



## Dimension (mm)

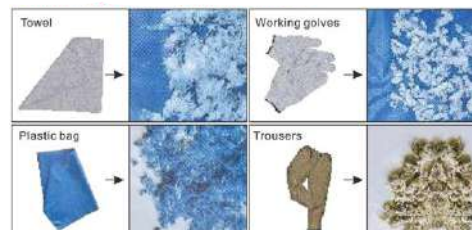
Model	Pump size	
	B	H
PSCP18-18-0.75F/T	225	500
PSCP20-18-1.1F/T	225	510
PSCP22-18-1.5F/T	275	552

Note: Float switch option (only single phase)

## Material of Construction (MOC)

- Pump body : Cast iron
- Motor body : Stainless steel 304
- Impeller : Cast iron
- Shaft : Stainless steel 304
- Mechanical seal : Sic-Sic-Viton

## Grinding capacity of the pump



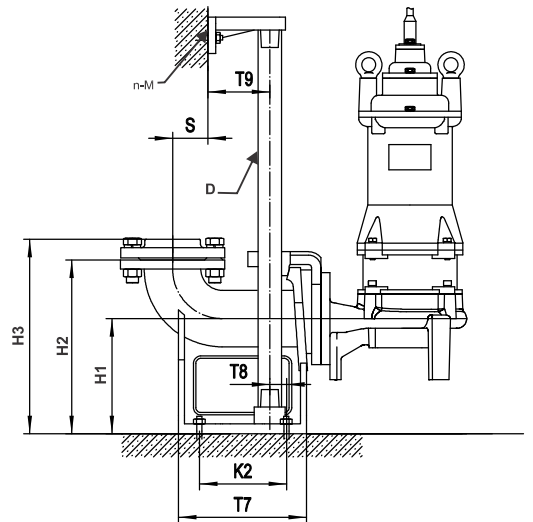
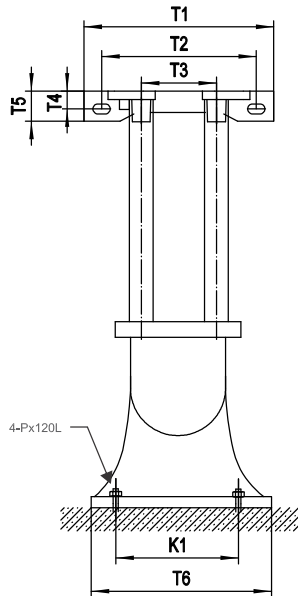
# Sewage Cutter Pump



## Sewage Cutter Pump Guide Rail System Details



A: Flange size of pump



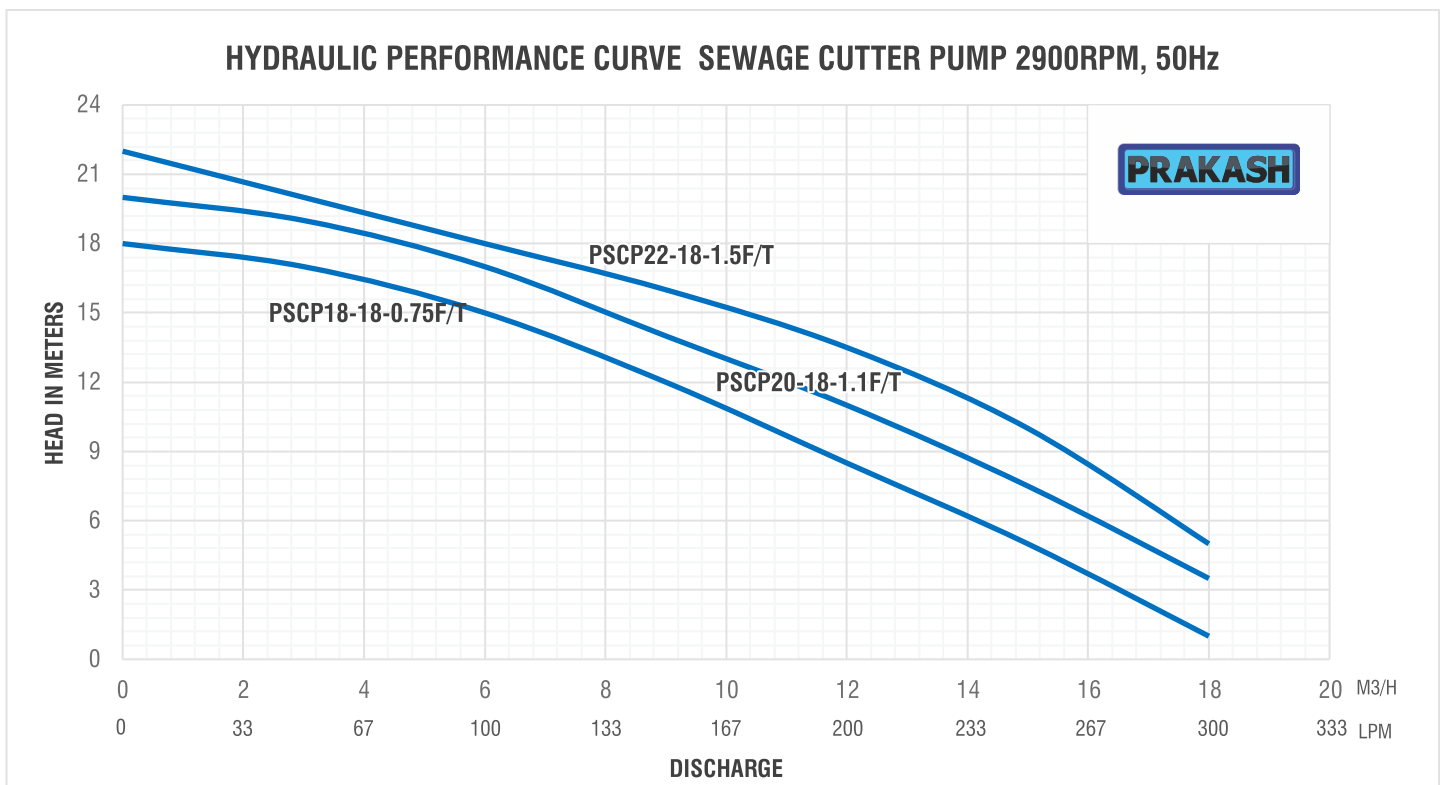
### Guide Rail Dimension

MODEL	T1	T2	T3	T4	T5	T6	T7	T8	T9	K1	K2	S	H1	H2	H3	D	n-M	P	A
40-40	225	185	70	18	35	110	140	4	65	65	70	60	115	195	219	25	2-M10x40	M16	Ø100/4-Ø14
50-50	265	215	105	25	42	200	215	13	67	165	135	63	160	250	276	25	2-M10x40	M16	Ø110/4-Ø10

### Performance Chart 2900RPM, 50Hz

Model	Power		Q	US GPM	0	13	26	40	53	66	79
	KW	HP		M3/H	0	3	6	9	12	15	18
				LPM	0	50	100	150	200	250	300
PSCP18-18-0.75F/T	0.75	1.0	Head (meters)	18	17	15	12	8.5	5	1	
PSCP20-18-1.1F/T	1.1	1.5	Head (meters)	20	19	17	14	11	7.5	3.5	
PSCP22-18-1.5F/T	1.5	2.0	Head (meters)	22	20	18	16	13.5	10	5	

### Performance Curve



# PRAKASH

Office in India

## PRAKASH PUMP

Survey No. 479, Opp. Supreme Estate-1, Zak Kadadara Road, Vill. - Kadadara,  
Tal. Dahegam, Gandhinagar, Gujarat 382305 INDIA E-mail: sale@prakashpump.com

Distributor Office for Middle East

## PRAKASH PUMP EST

P.O. Box: 20973 Industrial Area Al Ain (United Arab Emirates)  
Tel.: +971 3 7222733 Mob.: +971 50 6731283 E-mail: sale@prakashpump.com

Distributor Office for Oman

## GLOBAL EQUIPMENT MATERIAL CO. LLC

P.O. Box. 227, Postal Code: 320 Nakhal Road, Barka (Sultanate of Oman)  
Tel.: +968 26883982 Mob.: +968 94584686 E-mail: oman@prakashpump.com

Distributor Office for Saudi Arabia

## PRAKASH PUMP INDUSTRY

P.O. Box 14327, Bldg. 3616, Al Marwah 6447, Al Mishael Riyadh City, (Kingdoms of Saudi Arabia)  
Sulay Exit 18. Mobile: +966 539811109 Email: saudi@prakashpump.com

Factory Address

## PANJI ENGINEERING PVT LTD

Survey No. 479, Opp. Supreme Estate-1, Zak Kadadara Road, Vill. - Kadadara,  
Tal. Dahegam, Gandhinagar, Gujarat 382305 INDIA E-mail: sale@prakashpump.com



To get  
Quotation by email



## PRAKASHPUMPEST

These images given are only for illustration purpose  
for further details contact the sales team at  
sale@prakashpump.com / oman@prakashpump.com  
/ saudi@prakashpump.com



To get  
Website

