

PRAKASH

Quality, Reliability, Life

Peripheral and Centrifugal Pump



Applications

- Domestic Water Supply
- Lawn Sprinkler, villas
- Automobile Washing
- Gardens Water Supply
- Pressure Boosting in Various Fields, small air conditioner system or supporting equipment etc.

Performance Range

- Flow : up to 1200 LPM
- Head : up to 78 m
- Speed : 2900 rpm
- Power : 0.37 kW - 4.0 kW
- Frequency : 50 Hz

Application Limits

- Liquid temperature : up to 90°C
- Ambient temperature : up to 40°C
- Max. suction : up to 8 m
- Max. operating pressure : 10 bar
- Liquid PH : 6-8
- Altitude : ≤1000m

Motor Detail

- 2 Pole induction motor (TEFC)
- 100% Copper winding
- Protection class : IPX4
- Insulation class : F
- Thermal protection : Built-in (Only Single Phase)
- Voltage : Single Phase 220-240v, 50Hz
Three Phase 380-420v, 50Hz

Installation in applications

Suitable for clean water that does not contain abrasive particles and liquids that are not chemically aggressive towards the materials from which the pump is made.

Thanks for its reliability, the fact that these pumps are easy to use and very economical, these are ideal for domestic and civil use and in particular for distributing water in combination with small and medium pressure sets, irrigation of gardens and allotment. The pump should be installed in an enclosed environment, or at least sheltered from inclement weather.

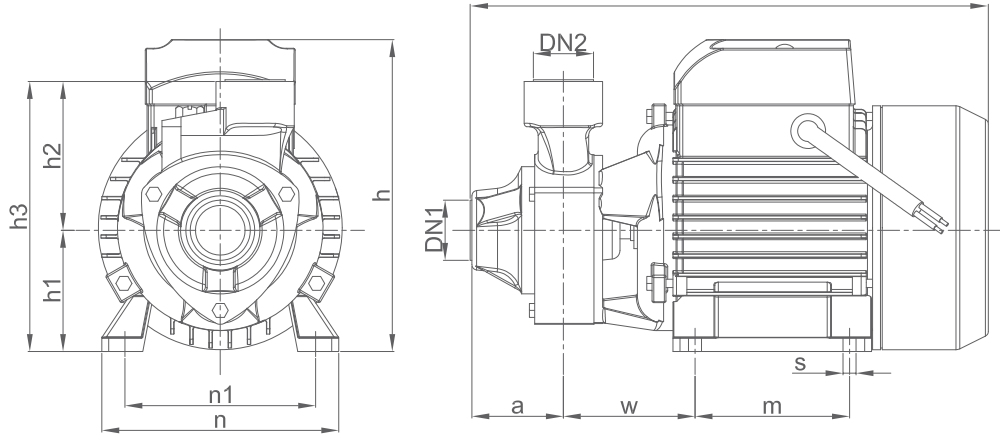
Pump Selection Chart

Model	Power		Voltage/ 50Hz	Rated Speed (RPM)	Phase	Inlet / Outlet	Max. Flow (lpm)	Max. Head (m)	Max. Suction (m)
	KW	HP							
PCP05	0.37	0.5	220-240v	2900	1 Phase	1" x 1"	35	35	8
PCP05SS	0.37	0.5	220-240v	2900	1 Phase	1" x 1"	35	35	8
PCP10	0.75	1.0	220-240v	2900	1 Phase	1" x 1"	100	36	8
PCP15	1.1	1.5	220-240v	2900	1 Phase	1¼" x 1"	170	34	8
PCP15A	1.1	1.5	220-240v	2900	1 Phase	2" x 2"	425	25	8
PCP20A	1.5	2.0	220-240v	2900	1 Phase	2" X 2"	480	30	8
PCP30A	2.2	3.0	220-240v	2900	1 Phase	2" x 2"	500	34	8
PCP30	2.2	3.0	220-240v	2900	1 Phase	3" X 3"	1200	19	8
PCP30S	2.2	3.0	220-240v	2900	1 Phase	3" x 3"	1200	19	8
PCP30T	2.2	3.0	380-420v	2900	3 Phase	3" X 3"	1200	19	8
PCP20AT	1.5	2.0	380-420v	2900	3 Phase	2" x 2"	425	30	8
PCP30AT	2.2	3.0	380-420v	2900	3 Phase	2" x 2"	450	34	8
PCP2-30	2.2	3.0	220-240v	2900	1 Phase	1¼" x 1"	150	57	8
PCP2-50	4.0	5.5	380-420v	2900	3 Phase	1½" x 1¼"	200	78	8

Pump Dimension

MODEL	PORTS		DIMENSIONS IN MM											Net weight (Kg)
	DN1	DN2	a	f	h	h1	h2	h3	m	n	n1	w	s	
PCP05/SS	1"	1"	42	265	152	63	75	138	80	120	100	55	7	5.3

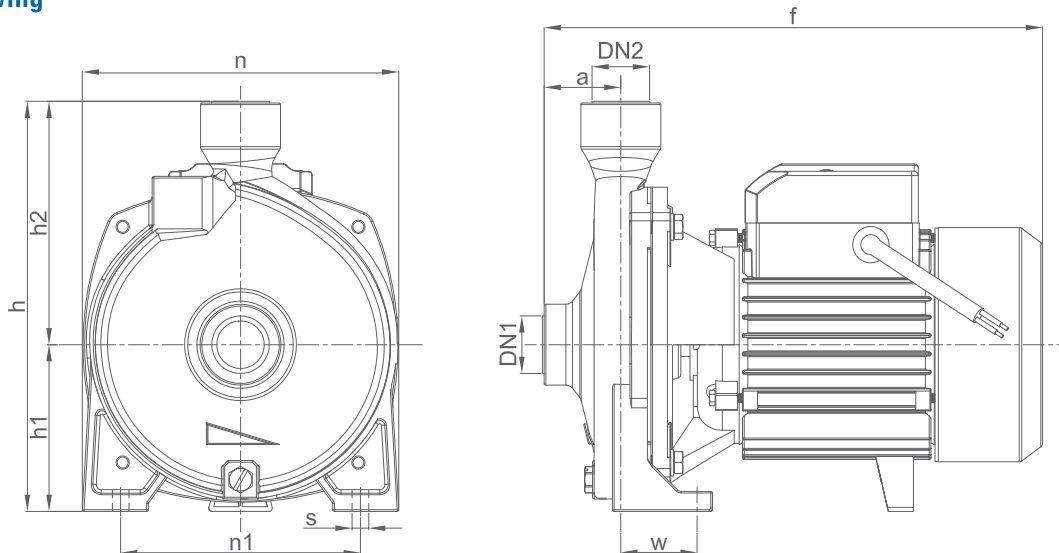
G.A. Drawing



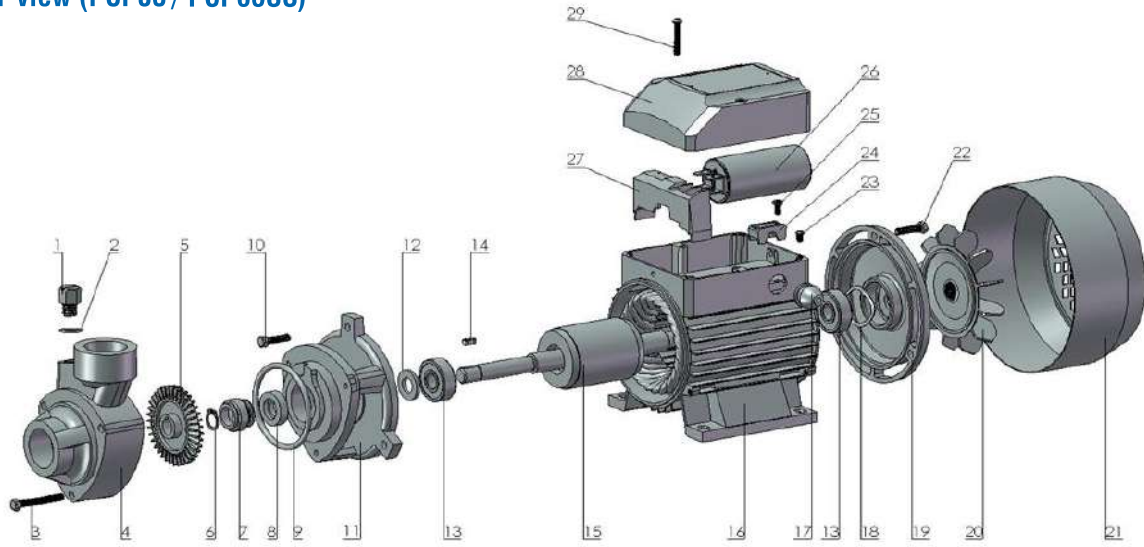
Pump Dimension

MODEL	PORTS		DIMENSIONS IN MM									Net weight (Kg)
	DN1	DN2	a	f	h	h1	h2	n	n1	w	s	
PCP10	1"	1"	42	300	240	92	148	190	160	38	10	12.9
PCP15	1¼"	1"	51	367	260	110	150	216	175	44.5	11	17.7
PCP15A	2"	2"	52.5	375	282	110	172	215	145	93	15	23
PCP20A	2"	2"	52.5	375	282	110	172	215	145	93	15	23.95
PCP30A	2"	2"	52.5	402	282	110	172	215	145	93	15	28.65
PCP30	3"	3"	70	424	316	120	196	240	190	-	12	32.8
PCP30S	3"	3"	70	466	315	120	195	240	190	-	12	37.9
PCP30T	3"	3"	70	466	315	120	195	240	190	-	12	36.6
PCP20AT	2"	2"	60	380	280	110	170	217	145	85	12	22.5
PCP30AT	2"	2"	61	444	280	110	170	217	145	100	12	23.6
PCP2-30	1¼"	1"	88	402	264	120	144	210	167	-	10	25.3
PCP2-50	1½"	1¼"	99.5	472	312	134	178	250	202	-	12	56.1

G.A. Drawing



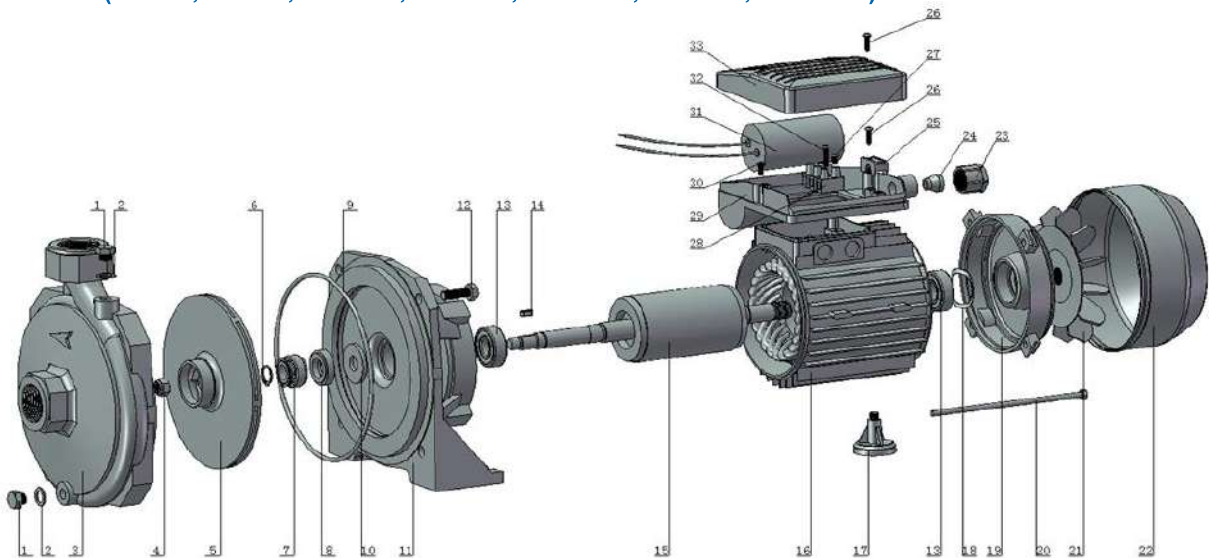
Exploded view (PCP05 / PCP05SS)



Material Of Construction (MOC)

Code No	Parts name	Material (PCP05)	Material (PCP05SS)	Code no.	Parts name	Material (PCP05)	Material (PCP05SS)
1	Drain plug	Brass	SS304	16	Stator/ motor body	AL/cast iron	AL/cast iron
2	O-ring	NBR/EPDM	NBR/EPDM	17	Cable guard	Rubber	Rubber
3	Bolt	MS	SS304	18	Wave washer	MS	MS
4	Pump body	Cast Iron	SS304	19	Rear cover	AL	AL
5	Impeller	Brass	Brass	20	Fan	ABS/PP	ABS/PP
6	Snap ring	MS	MS	21	Fan cover	ZI 102/MS	ZI 102/MS
7	Mechanical seal	Sic/Cermic/Viton/SS	Sic/Cermic/Viton/SS	22	Bolt	SS304	SS304
8				Screw	MS	MS	
9	O-ring	NBR	NBR	24	Cable holder	Plastic	Plastic
10	Bolt	MS	SS304	25	Screw	MS	MS
11	Bracket/front cover	Cast Iron	SS304	26	Capacitor		
12	Splash guard	NBR	NBR	27	Terminal block	PVC	PVC
13	Bearing			28	Terminal box	Flame retardant ABS	Flame retardant ABS
14	Shaft key	SS304	SS304	29	Screw	MS	MS
15	Rotor	Shaft welded AISI304	Shaft welded AISI304				

Exploded view (PCP10, PCP15, PCP15A, PCP20A, PCP20AT, PCP30A, PCP30AT)

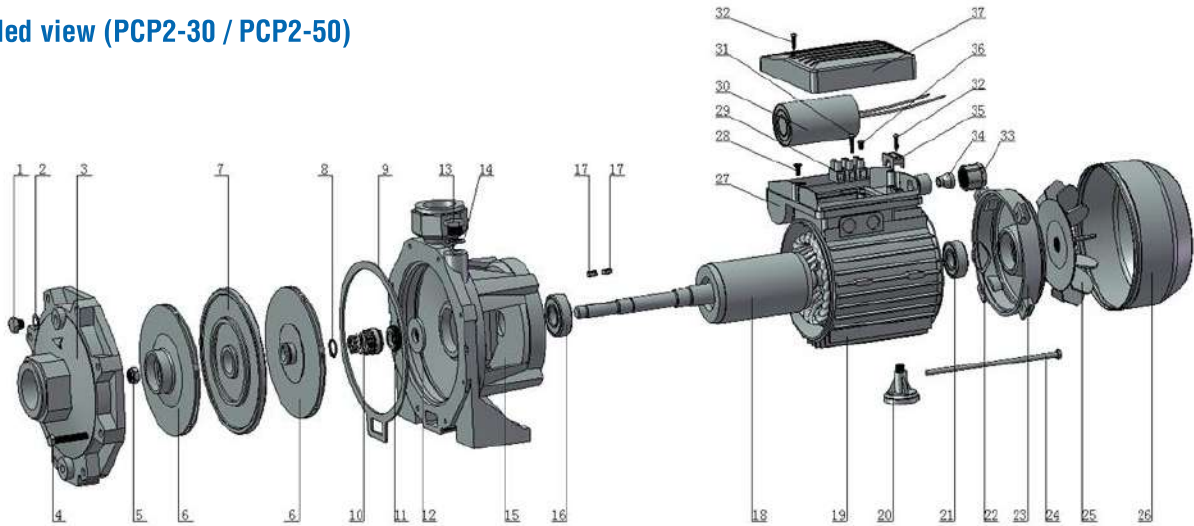


Material Of Construction (MOC)

Code no.	Parts name	Material	Code no.	Parts name	Material
1	Drain plug	Brass	18	Wave washer	MS
2	O-ring	NBR/EPDM	19	Rear cover	AL
3	Pump body/Volute	Cast iron	20	Tie Bolt	MS
4	Nut	SS	21	Fan	ABS
5	Impeller	Brass/SS	22	Fan cover	ZI 102/MS
6	Snap ring	MS	23	Cable gland	Plastic
7	Mechanical seal	Sic/Cermic/Viton/SS	24	Retainer ring	NBR
8			25	Cable holder	Plastic
9	O-ring	NBR/EPDM	26	Screw	MS
10	Splash guard	NBR	27	Screw	MS
11	Bracket/front cover	Cast iron	28	Terminal block	PVC
12	Bolt	MS	29	Terminal box	Flame retardant ABS
13	Front Bearing		30	Screw	MS
14	Shaft key	SS304	31	Capacitor	
15	Rotor	Shaft welded AISI304	32	Screw	MS
16	Stator/ motor body	AL/cast iron	33	Terminal box cover	Flame retardant ABS
17	Foot	Plastic/MS			

PCP10, PCP15, PCP15A, PCP20A, PCP20AT, PCP30A, PCP30AT = Impeller SS PCP30, PCP30S, PCP30T = Impeller Brass

Exploded view (PCP2-30 / PCP2-50)



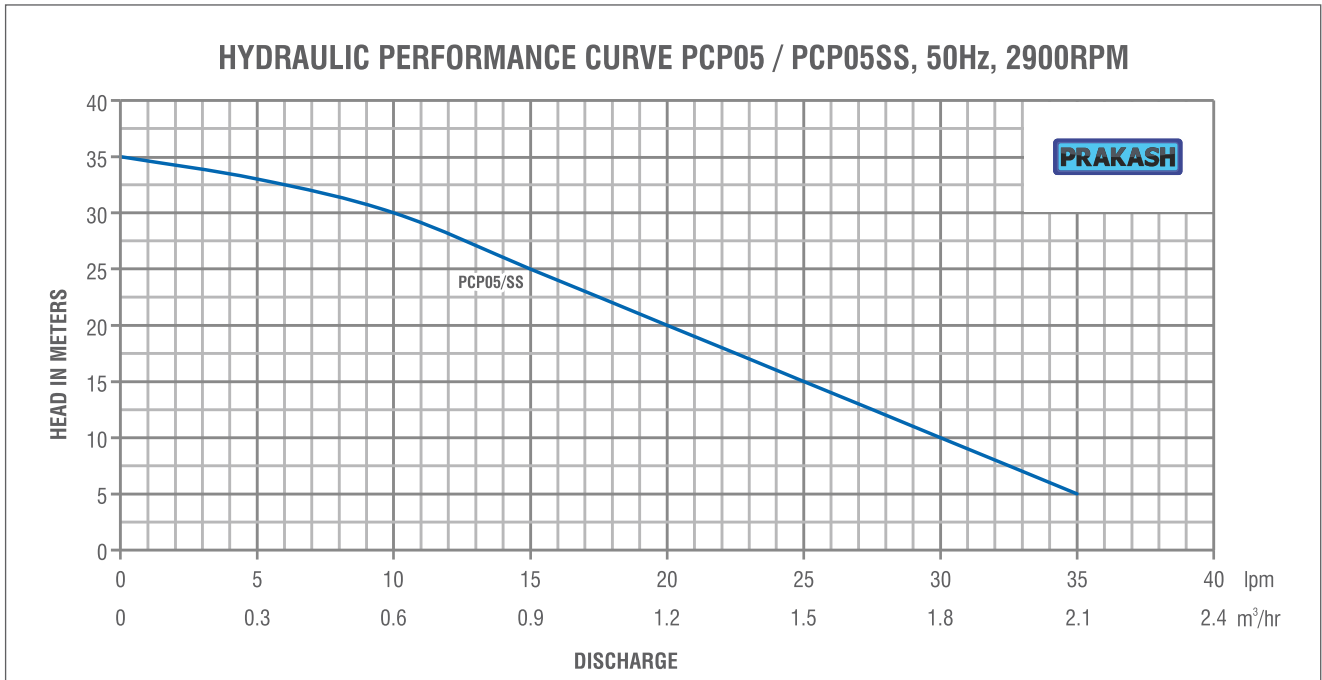
Material Of Construction (MOC)

Code no.	Parts name	Material	Code no.	Parts name	Material
1	Drain plug	Brass	20	Foot	Plastic
2	O-ring	NBR/EPDM	21	Rear bearing	
3	Pump body/Volute	Cast iron HT200	22	Wave washer	MS
4	Bolt	MS	23	Rear cover	1-phase Al / 3-phase Cl
5	Nut	SS	24	Tie bolt	MS
6	Impeller	Brass	25	Fan	ABS/PP
7	Partition/baffle	Cast iron HT200	26	Fan cover	ZI 102
8	Snap ring	MS	27	Terminal box	ABS
9	Gasket	NBR	28	Screw	MS
10&11	Mechanical seal	Sic/Cermic/Viton/SS	29	Terminal block	PC
12	Splash ring	NBR	30	Capacitor	
13	Drain plug	Brass	31	Screw	MS
14	O-ring	NBR/EPDM	32	Screw	MS
15	Bracket/front cover	Cast iron HT200	33	Cable gland	PVC
16	Front bearing		34	Retainer ring	NBR
17	Shaft key	SS304	35	Cable holder	Plastic
18	Rotor	Shaft welded AISI304	36	Screw	MS
19	Stator/motor body	1-phase Al / 3-phase Cl	37	Terminal box cover	Flame retardant ABS
20	Foot	Plastic			

Performance Chart

2900 RPM

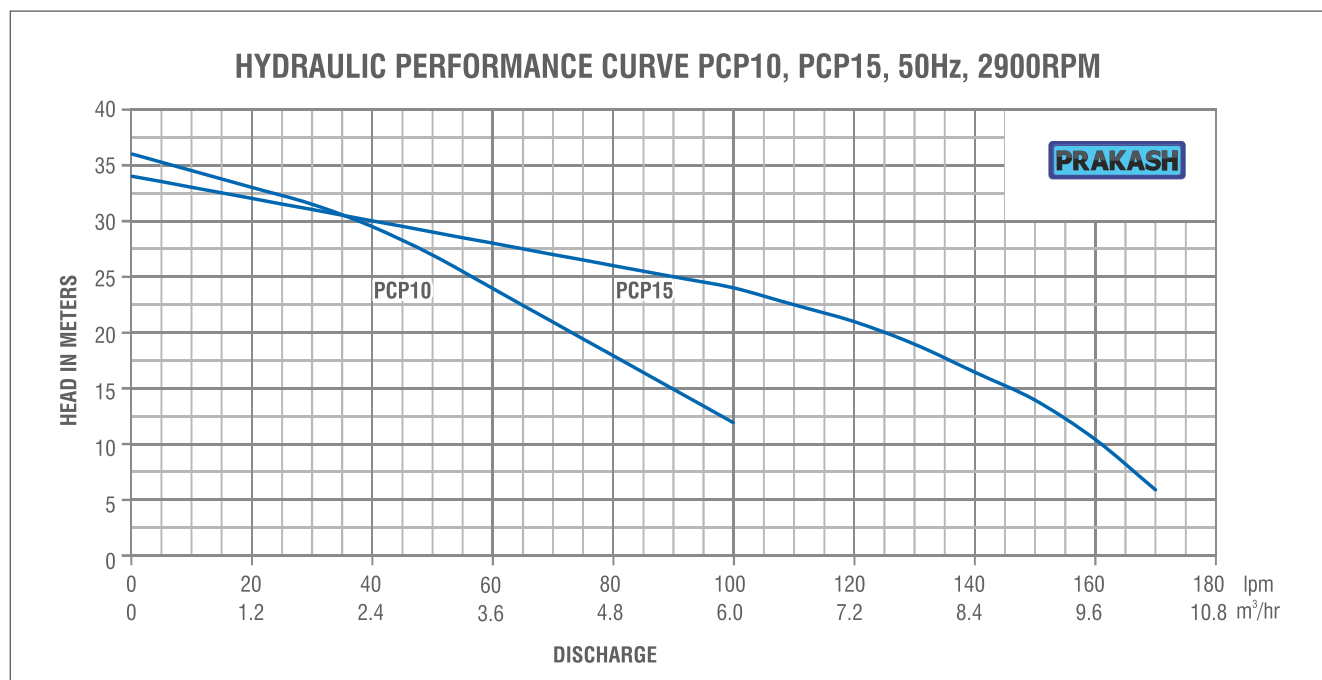
MODEL	Power		US GPM	0	1.3	2.6	4.0	5.3	6.6	7.9	9.2
			M3/H	0	0.3	0.6	0.9	1.2	1.5	1.8	2.1
	HP	KW	LPM	0	5	10	15	20	25	30	35
PCP05/SS	0.5	0.37	Head (m)	35	33	30	25	20	15	10	5



Performance Chart

2900 RPM

Model	Power		Q	US GPM	0	3	5	8	11	13	16	18	21	24	26	29	32	34	37	40	42	50
				M³/HR	0	0.6	1.2	1.8	2.4	3	3.6	4.2	4.8	5.4	6	6.6	7.2	7.8	8.4	9	9.6	10.2
	LPM	0		10	20	30	40	50	60	70	80	90	100	110	120	130	140	150	160	170		
PCP10	0.75	1.0	Head (m)	36	34.5	33	31.5	29.5	27	24	21	18	15	12								
PCP15	1.1	1.5	Head (m)	34	33	32	31	30	29	28	27	26	25	24	22.5	21	19	16.5	14	10.5	6	

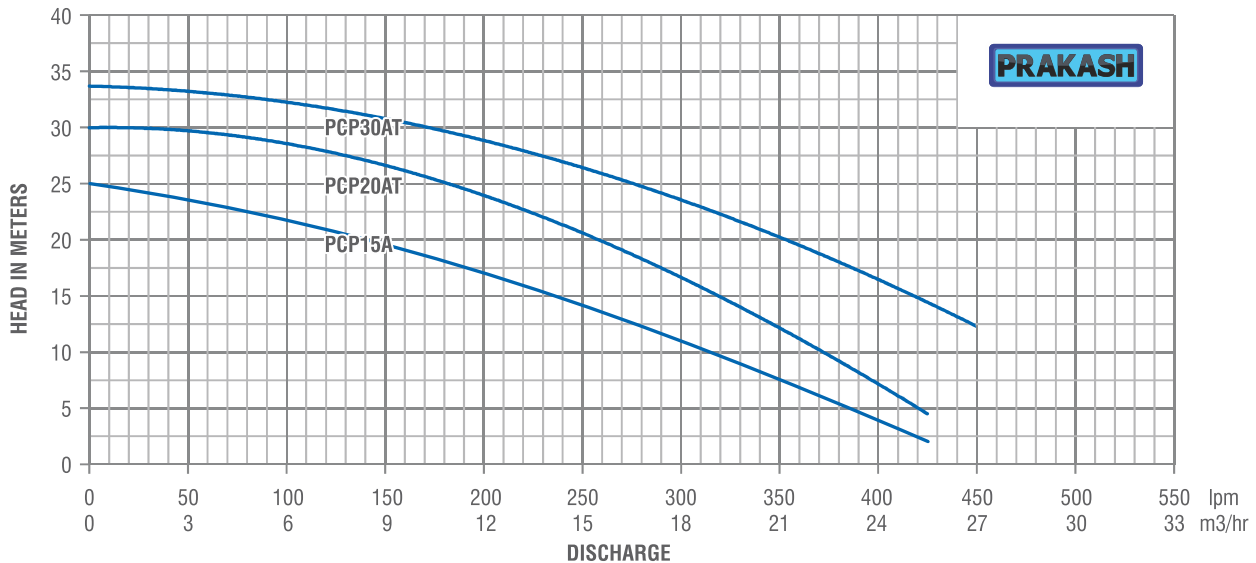


Performance Chart

2900 RPM

Model	Power		Q	US GPM	0	7	13	20	26	33	40	46	53	59	63	73	79	86	92	99	106	112	119
	KW	HP		M ³ /HR	0	1.5	3	4.5	6	7.5	9	10.5	12	13.5	15	16.5	18	19.5	21	22.5	24	25.5	27
				LPM	0	25	50	75	100	125	150	175	200	225	250	275	300	325	350	375	400	425	450
PCP15A	1.1	1.5	Head (m)	25	24.5	24	23.5	23	22	21	20	19	17.5	16	14.5	12.5	11	9	7	5	2		
PCP20AT	1.5	2.0	Head (m)	30	29.5	29	28.5	28	27.5	26.5	25.5	24	22	20	18	16	14	12	9.5	7	4		
PCP30AT	2.2	3.0	Head (m)	34	33.5	33	32.5	32	31.5	31	30	29	28	26.5	25	23.5	22	20	18	16.5	14.5	10	

HYDRAULIC PERFORMANCE CURVE PCP15A, 20AT, 30AT, 50Hz, 2900RPM

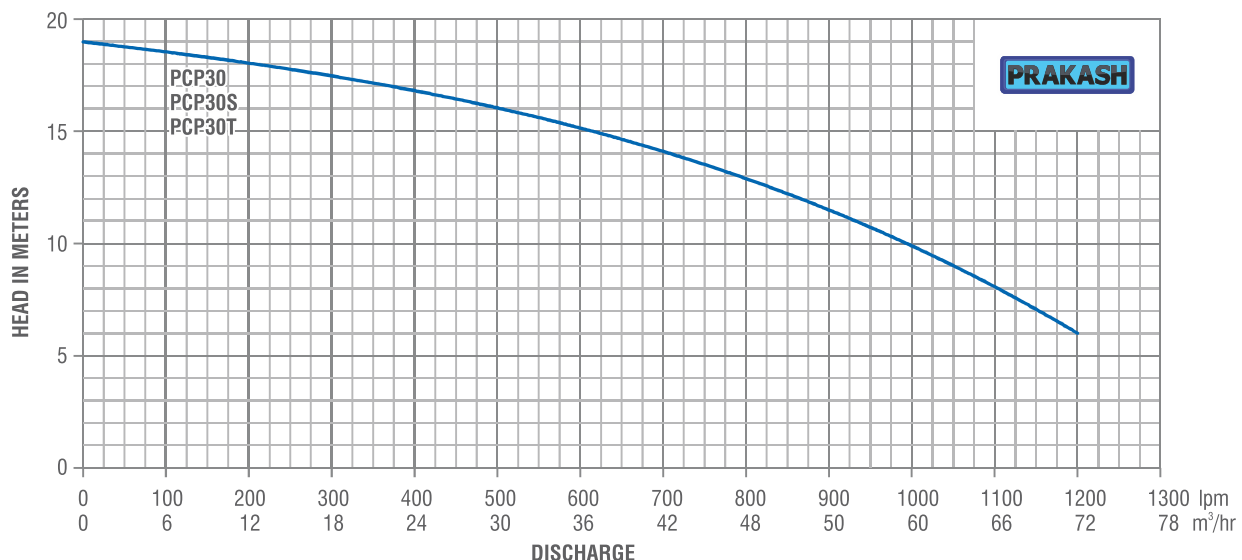


Performance Chart

2900 RPM

Model	Power		Q	US GPM	0	26	53	79	106	132	159	185	211	238	264	291	317
	KW	HP		M ³ /HR	0	6	12	18	24	30	36	42	48	54	60	66	72
				LPM	0	100	200	300	400	500	600	700	800	900	1000	1100	1200
PCP30	2.2	3.0	Head (m)	19	18.5	18	17.5	17	16	15	14	13	11.5	10	8	6	
PCP30S	2.2	3.0	Head (m)	19	18.5	18	17.5	17	16	15	14	13	11.5	10	8	6	
PCP30T	2.2	3.0	Head (m)	19	18.5	18	17.5	17	16	15	14	13	11.5	10	8	6	

HYDRAULIC PERFORMANCE CURVE PCP30, PCP30S, PCP30T, 50Hz, 2900RPM

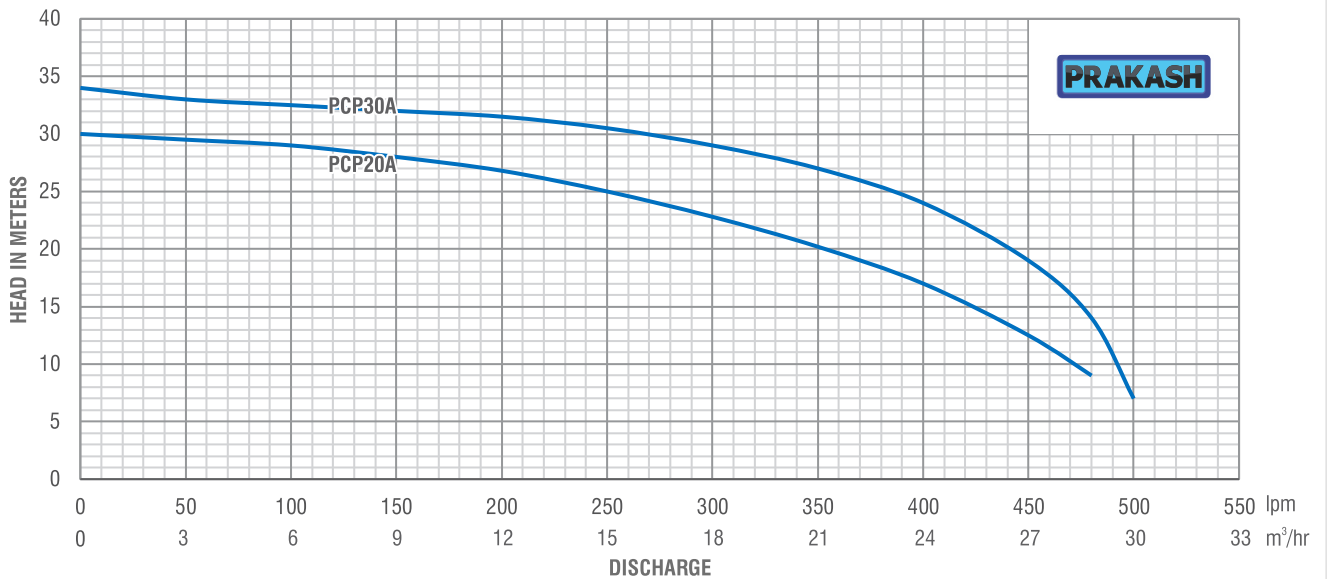


Performance Chart

2900 RPM

Model	Power		Q	US GPM	0	13	26	40	53	63	79	92	106	119	127	132
	KW	HP		M ³ /HR	0	3	6	9	12	15	18	21	24	27	28.8	30
				LPM	0	50	100	150	200	250	300	350	400	450	480	500
PCP20A	1.5	2.0	Head (m)	30	29.5	29	28	27	25	22.5	20	17	12.5	9		
PCP30A	2.2	3.0	Head (m)	34	33	32.5	32	31.5	30.5	29	27	26	19	13	7	

HYDRAULIC PERFORMANCE CURVE PCP20A, PCP30A 2900RPM, 50Hz

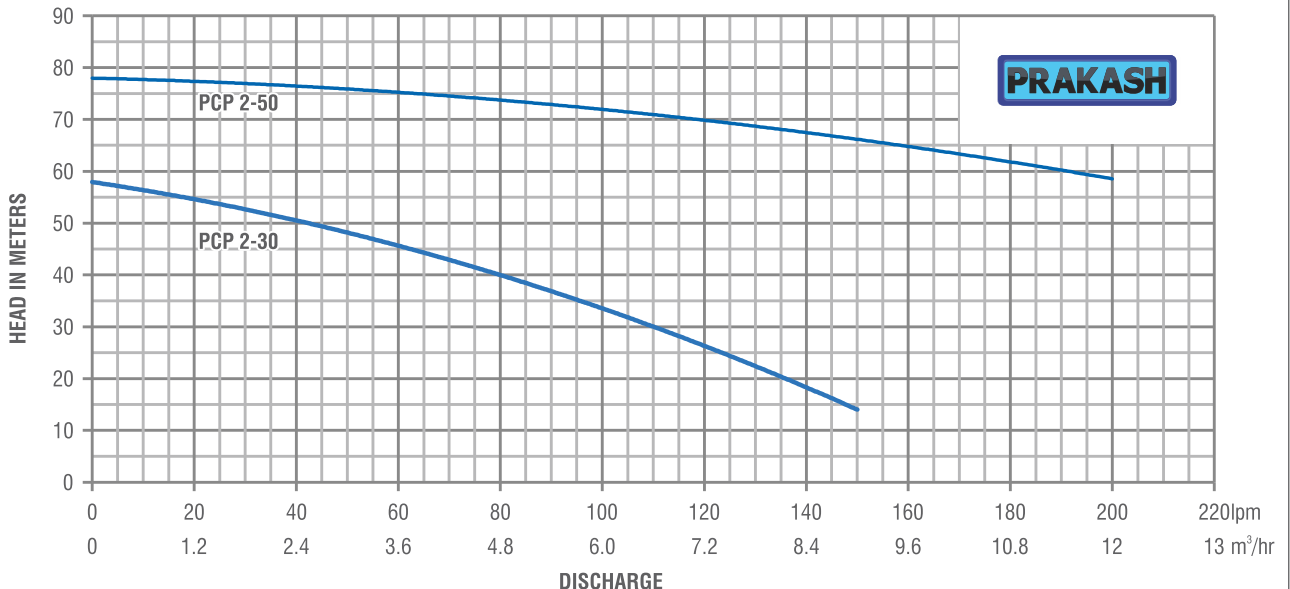


Performance Chart

2900 RPM

Model	Power		Q	US GPM	0	7	13	26	33	40	46	53
	KW	HP		M ³ /HR	0	1.5	3	6	7.5	9	10.5	12.0
				LPM	0	25	50	100	125	150	175	200
PCP2-30	2.2	3.0	Head (m)	57	54	50	33	22	16			
PCP2-50	4.0	5.5	Head (m)	78	77	76	72	69	66	62	59	

HYDRAULIC PERFORMANCE CURVE PCP2-30 & PCP2-50, 50Hz, 2900RPM



PRAKASH

Office in India

PRAKASH PUMP

Survey No. 479, Opp. Supreme Estate-1, Zak Kadadara Road, Vill. - Kadadara,
Tal. Dahegam, Gandhinagar, Gujarat 382305 INDIA E-mail: sale@prakashpump.com

Distributor Office for Middle East

PRAKASH PUMP EST

P.O. Box: 20973 Industrial Area Al Ain (United Arab Emirates)
Tel.: +971 3 7222733 Mob.: +971 50 6731283 E-mail: sale@prakashpump.com

Distributor Office for Oman

GLOBAL EQUIPMENT MATERIAL CO. LLC

P.O. Box. 227, Postal Code: 320 Nakhal Road, Barka (Sultanate of Oman)
Tel.: +968 26883982 Mob.: +968 94584686 E-mail: oman@prakashpump.com

Distributor Office for Saudi Arabia

PRAKASH PUMP INDUSTRY

P.O. Box 14327, Bldg. 3616, Al Marwah 6447, Al Mishael Riyadh City, (Kingdoms of Saudi Arabia)
Sulay Exit 18. Mobile: +966 539811109 Email: saudi@prakashpump.com

Factory Address

PANJI ENGINEERING PVT LTD

Survey No. 479, Opp. Supreme Estate-1, Zak Kadadara Road, Vill. - Kadadara,
Tal. Dahegam, Gandhinagar, Gujarat 382305 INDIA E-mail: sale@prakashpump.com



To get
Quotation by email



PRAKASHPUMPEST

These images given are only for illustration purpose
for further details contact the sales team at
sale@prakashpump.com / oman@prakashpump.com
/ saudi@prakashpump.com



To get
Website

