



Quality, Reliability, Life

Automatic Pressure Controller & Float Switch



www.prakashpump.com

Applications

- Household Water Consumption
- Commercial Water Consumption
- Garden Water Consumption.

Pump Controller is more energy saving, more intelligent and more humanized.

It is run the pump safe and more environment friendly, Pump controller improve the imbalance of water conservancy, extend water pump service life, make the most use of water resource.

Products Advantages:

Dynamic Shape:

Streamlined design with intelligent technology it gives Dynamic Shape.

Delay Startup:

The pressure controller delays to start 3 seconds after the current is switched on to protect the pump and personal safety.

Dry running protection:

After 3-5 seconds usages without water. the controller will cutoff current source automatically.

Automatic restart:

Circulate by time, automatically restart to test water flow until water supply going stable.

Stop water supply and stop the pump:

When stopping water supply, the intelligent control system will inspect automatically and control the pump to slow down and stop operating

Flow Control:

When the outlet water flow becomes slow, the intelligent control system will inspect automatically and switch to small flow control system to guarantee normal use of the water pump, which infinitely extends the life span of the controller and automatically realize the barrier free operation of water pump.

Overload Protection:

The intelligent system is equipped with heat overload protector to prevent water pump being overheated and damages under abnormal use.

Prakash Pressure Controller

PAPC-1



Rated voltage	220V-240V
Frequency	50/60 Hz
Maximum Current	10A
Maximum power	1.1KW
Starting pressure setting	1.5 Bar / 1.0 -2.5 Bar
Max. working pressure	10 bar
Connection thread	Inlet male thread G1" (Vertical) Outlet male threads G1" (Vertical)
Protection rating	IP65
Maximum Operating Temperature	60°c
Cable requirement	Cable 25CM for power & 40CM for motor

PAPC-3



Rated voltage	220V-240V
Frequency	50/60Hz
Maximum current	10A / 20A / 30A
Maximum power	1.1KW / 2.2KW
Starting pressure setting	1.5-2.5 Bar / 1.0 -3.5 Bar
Max. working pressure	10 bar
Connection thread	Inlet male thread G1" (Vertical) Outlet female threads G1" (Horizontal)
Protection rating	IP65
Maximum Operating Temperature	60°c
Cable requirement	Cable 25CM for power & 40CM for motor

Prakash Pressure Controller PAPC-2A



Rated voltage	220V-240V
Frequency	50 / 60Hz
Max current	20A / 30A
Max power	2.2KW
Starting pressure setting	1.0-3.5BAR
Max working pressure	10BAR
Connection thread	Inlet male thread G2" (Vertical) Outlet male thread G2" (Horizontal)
Protection rating	IP65
Max working temperature	60°C
Cable	25CM for power & 40CM for motor

Prakash Float Switch PFS-3 / PFS-5



Rated voltage	220V-240V
Frequency	50 / 60Hz
Max current	10(4) A / 20(8) A
Protection grade	IP68
Maximum operating temperature	55°C
Color	Black
Cable	3 meter / 5 meter

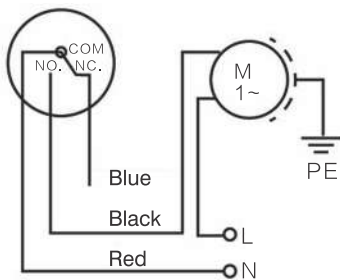
Illustration For Counterweight Installation:



Peel the plastic ring off the counterweight before installation and set the ring around the cable, then insert and fix it with moderate pressure at the fixing end.

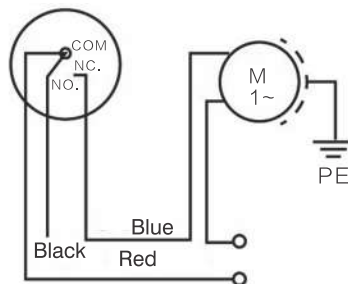
Description

Auto- fill-water modes



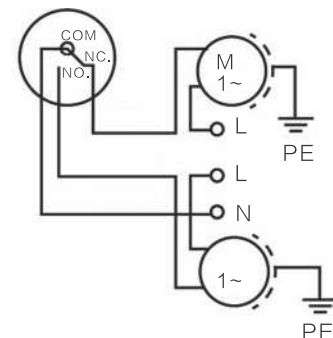
connect the control's blue line to electric pump, black line is connected to zero line, black, brown line can not be connected and should be insulated.

Auto-grainage-and-lack-water protection modes



connect the control's brown line to electric pump, the black line is connected to zero line, the blue line can not be connected and should be insulated.

Fill-water and drainage auto-switch modes



the chart is fill-water and drainage auto-switch mode, this electric connection chart synthesise by automatic fill water and auto-drainage.

PRAKASH

Office in India

PRAKASH PUMP

Survey No. 479, Opp. Supreme Estate-1, Zak Kadadara Road, Vill. - Kadadara,
Tal. Dahegam, Gandhinagar, Gujarat 382305 INDIA E-mail: sale@prakashpump.com

Distributor Office for Middle East

PRAKASH PUMP EST

P.O. Box: 20973 Industrial Area Al Ain (United Arab Emirates)
Tel.: +971 3 7222733 Mob.: +971 50 6731283 E-mail: sale@prakashpump.com

Distributor Office for Oman

GLOBAL EQUIPMENT MATERIAL CO. LLC

P.O. Box. 227, Postal Code: 320 Nakhal Road, Barka (Sultanate of Oman)
Tel.: +968 26883982 Mob.: +968 94584686 E-mail: oman@prakashpump.com

Distributor Office for Saudi Arabia

PRAKASH PUMP INDUSTRY

P.O. Box 14327, Bldg. 3616, Al Marwah 6447, Al Mishael Riyadh City, (Kingdoms of Saudi Arabia)
Sulay Exit 18. Mobile: +966 539811109 Email: saudi@prakashpump.com

Factory Address

PANJI ENGINEERING PVT LTD

Survey No. 479, Opp. Supreme Estate-1, Zak Kadadara Road, Vill. - Kadadara,
Tal. Dahegam, Gandhinagar, Gujarat 382305 INDIA E-mail: sale@prakashpump.com



To get
Quotation by email



PRAKASHPUMPEST

These images given are only for illustration purpose
for further details contact the sales team at
sale@prakashpump.com / oman@prakashpump.com
/ saudi@prakashpump.com



To get
Website

