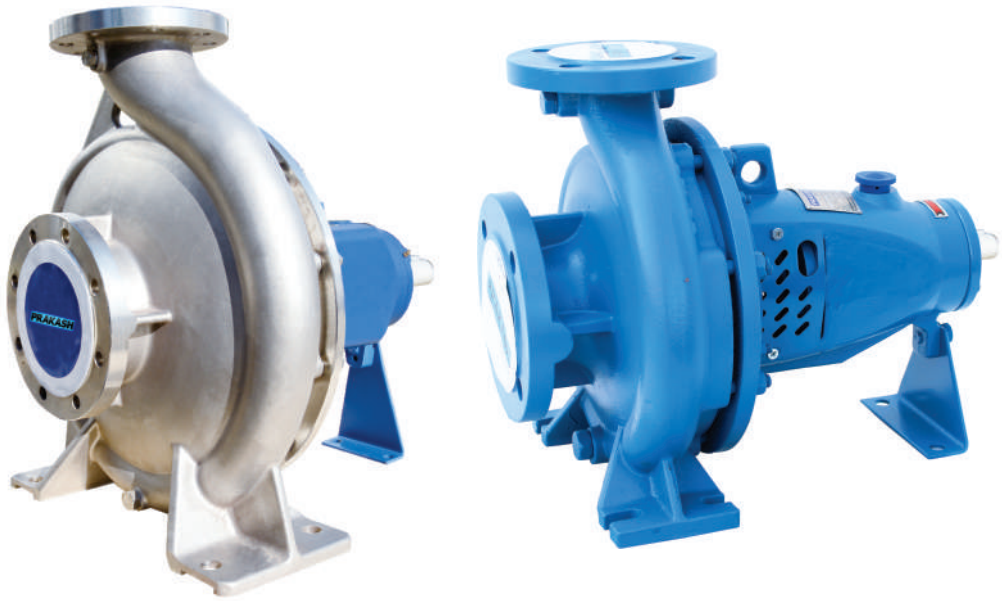




Quality, Reliability, Life

End Suction Centrifugal Pump



www.prakashpump.com

Applications

- Hot & cold water circulation
- HVAC and Cooling Tower
- Marine - Ballasting & Bilge
- Booster and Pressurization Set
- Irrigation and agriculture
- Water supply and drainage
- Food and chemical industry (with stainless steel material)
- Fire Protection & Fighting
- Factory Pumping

Performance Range

Flow Rate (Q)	4-1584 m ³ /h
Head (H)	2-162m
Speed	1450 or 2900 rpm (50Hz) /1750 or 3500 rpm (60Hz)
Max liquid temp	85°C(standard) ; 105°C(on request)
Working Pressure	1.0 MPa standard ; 1.6 MPa on request
Conveying Medium	Clean water or liquids similar to clean water in physical property

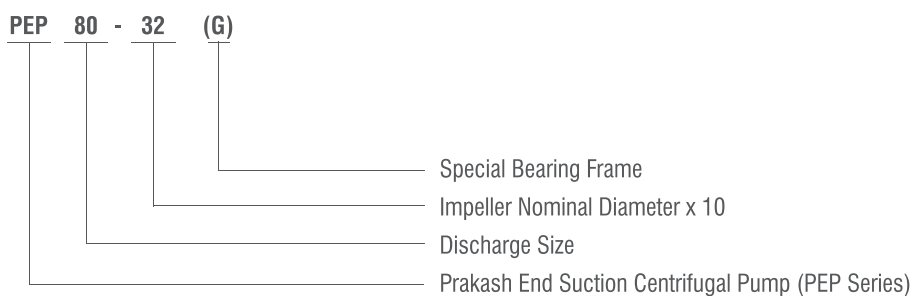
Motor Details

- Speed : 1450 & 2900 RPM (upon request 1750 & 3500 RPM)
- Insulation Class-F & B
- Protection Class-IP54 & IP55
- Duty - S1
- Power Supply : Single Phase 220-240V, 50Hz (upon request 60Hz)
Three Phase 380-420V, 50Hz (upon request 60Hz)

Installation and use

Prakash PEP series end suction centrifugal pumps are designed complying to BS EN733 / DIN24255 standard. This Series of pumps are frame mounted pumps coupled with electric motors by flexible type of coupling and have a great advantages in interchangeable parts, high quality and low cost, wide applications in fire-fighting systems, air-condition systems, water treatment plants, water transport and supply.

Model Instruction



Material Code

Material Code
 C: Cast Iron
 Q: Ductile Iron
 B: Brass
 S: ASTM 420
 45: ASTM 1045
 S304: ASTM 304
 S316: ASTM 316

- **Bearing Frame Code**
 H: Bearing frame for double-row bearing
 G: Bigger shaft and bearing frame
 Default: Standard
- **Seal Type**
 M: Mechanical Seal
 P: Gland Packing

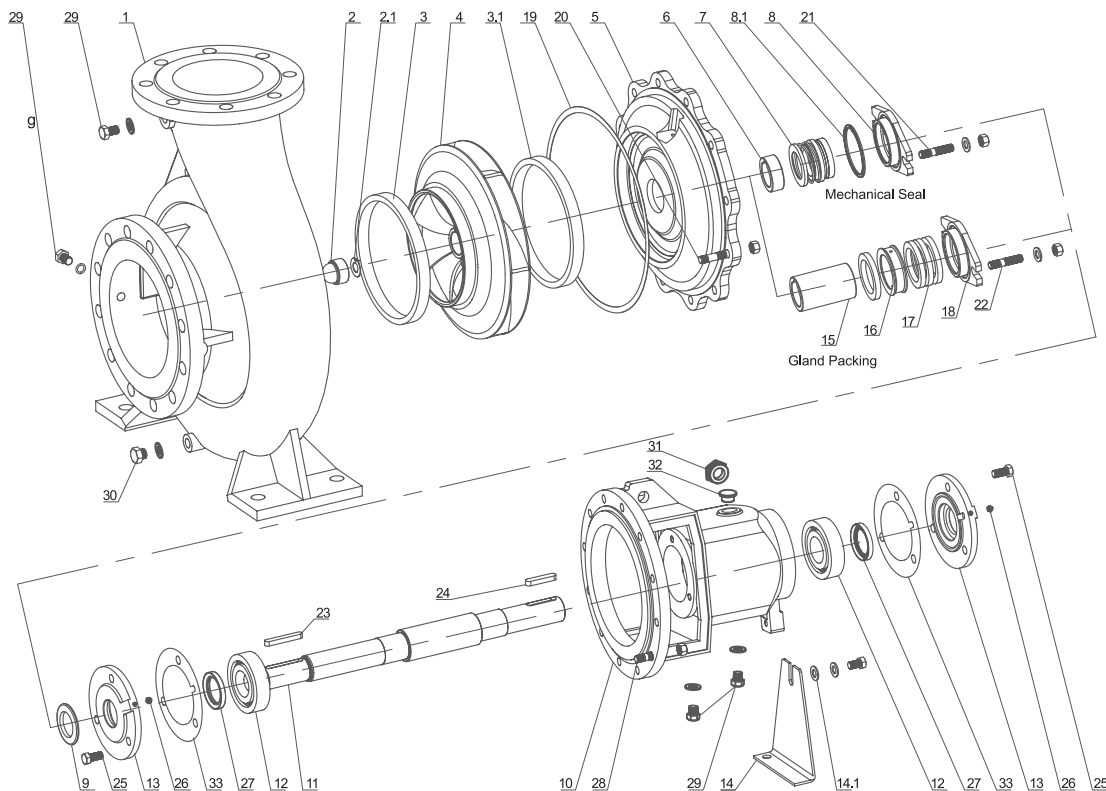
Design & Structure

Design	Performance and dimensions referring to the European standard BS EN733 / DIN24255
Structure	Horizontal, Axial End-Suction, Single-Stage, Single-Suction, Volute Casing, Back pull-out
DN (mm)	32-300
Flange	DIN2501 PN16 GB /T17241.6 PN1.6

End Suction Centrifugal Pump



Exploded View



Material of Construction (MOC)

Code	Part name	Material	Code	Part name	Material
1	Casing	Cast iron HT200	16	Packing Seal Cage Throat Bushing	Brass
2	Impeller nut	SS304	17	Gland Packing	Graphite packing
2.1	Lock washer	SS304	18	Gland Cover	Ductile iron QT400-15
3	Wear Ring (Front)	Cast iron HT250	19	Casing Gasket	Green shell paper/NBR
3.1	Wear Ring (Back)	Cast iron HT250	20	Stud Bolt	Medium carbon steel /SS1035
4	Impeller	SS304	21	Stud Bolt	Medium carbon steel /SS1035
5	Casing cover	Cast iron HT200	22	Stud Bolt	Medium carbon steel /SS1035
6	Shaft Spacer	SS304	23	Key	SS1045
7	Mechanical Seal	Sic-carbide/carbon/viton (MG2)	24	Key	SS1045
8	Seal Cover	Ductile iron QT400-15	25	Screw Bolt	Medium carbon steel /SS1035
8.1	O-Ring	Fluorine/Viton Rubber	26	Oil Cup	Brass
9	Rubber Slinger	NBR	27	Felting Oil Sael	Rubber
10	Bearing Frame	Cast iron HT200	28	Stud Bolt	Medium carbon steel /SS1035
11	Shaft	SS420	29	Plug	Mild steel
12	Bearing	NTN/NSK	30	Plug	Mild steel
13	Bearing Cover	Cast iron HT200	31	Oil Scale	Plastic
14	Support Foot	Mild steel	32	Oil Cover	Aluminum alloy
14.1	Flat Washer	Mild steel	33	Throat Bushing Gasket	Green shell paper
15	Packing sleeve	SS420			

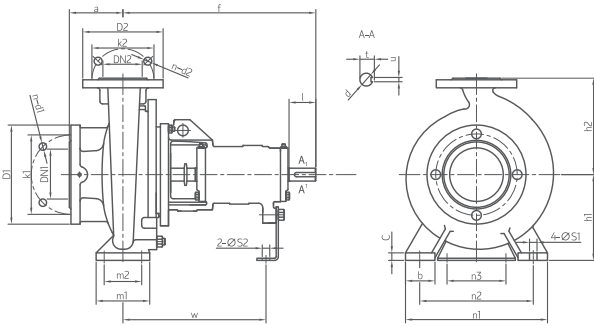
Material

Part	Standard Material	Option / on request
Casting	Cast Iron	Ductile Iron / ASTM304 / ASTM316
Impeller	ASTM304	Brass / Cast Iron /ASTM316
Shaft	ASTM420	ASTM304 / ASTM316 / ASTM1045
Shaft Seal	Mechanical Seal	Gland Packing

End Suction Centrifugal Pump



Flange Dimensions (IS07005.2 DIN2501 PN16 GB/T17241.6 PN1.6)

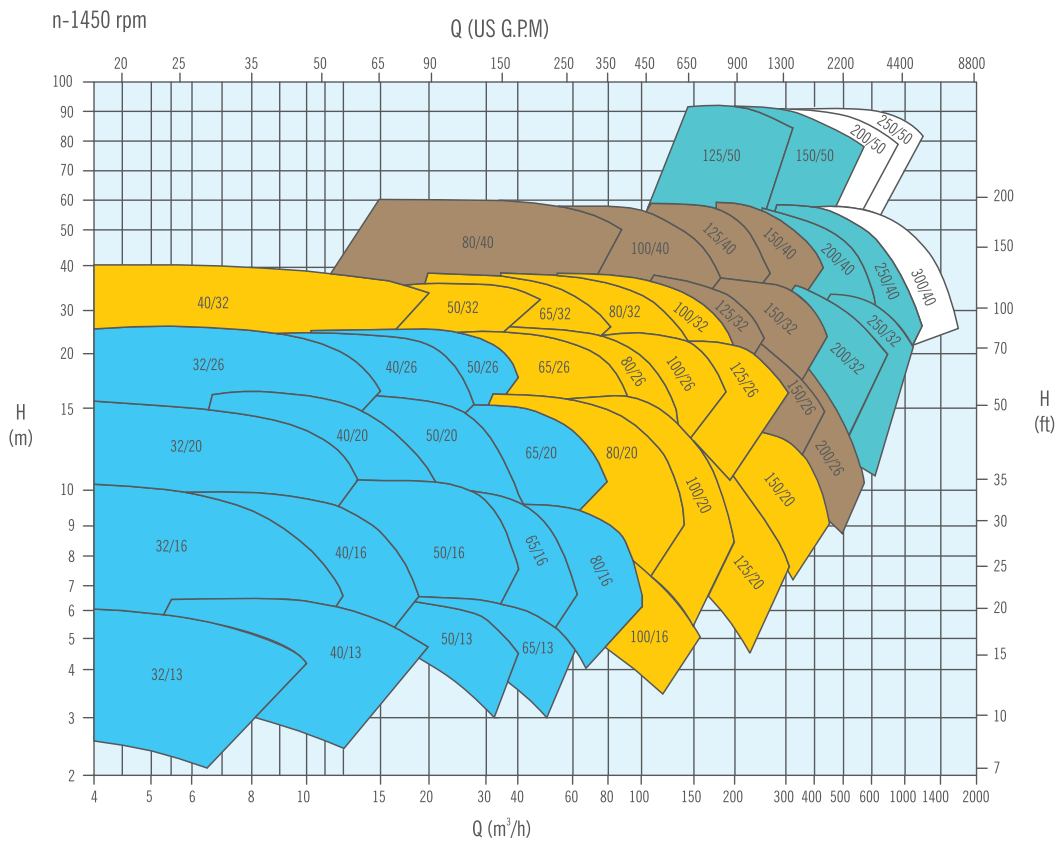
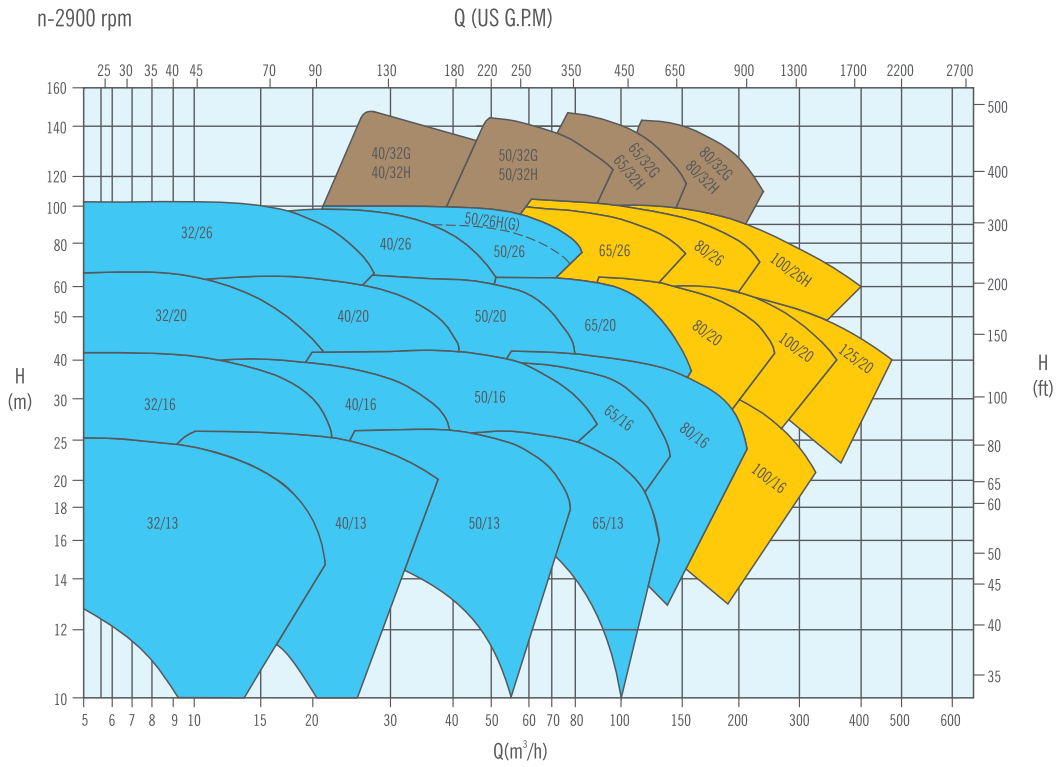


DN1/DN2	32	40	50	65	80	100
D1/D2	140	150	165	185	200	220
K1/K2	100	110	125	145	160	180
n-d1/n-d2	4-Ø18	4-Ø18	4-Ø18	4-Ø18	8-Ø18	8-Ø18

DN1/DN2	125	150	200	250	300	350
D1/D2	250	285	340	405	460	520
K1/K2	210	240	295	355	410	470
n-d1/n-d2	8-Ø18	8-Ø22	12-Ø22	12-Ø26	12-Ø26	16-Ø26

Model	Bearing Inner Dia.	DN2	DN1	a	f	h1	h2	b	c	n3	m1	m2	n1	n2	S1	S2	w	d	l	t	u	Weight (kg)																																			
PEP32/13	25	32	50	80	360	112	140	50	14	100	100	70	190	140	14								29																																		
PEP32/16						132	160						240	190									35																																		
PEP32/20						160	180						225	160									47																																		
PEP32/26						180	225						320	250									58																																		
PEP40/13						112	140						210	160									31																																		
PEP40/16		132	160	240	190	34																																																			
PEP40/20		160	180	265	212	45																																																			
PEP40/26(H)		180	225	320	250	61																																																			
PEP40/32		200	250	345	280	94																																																			
PEP40/32(H)		200	250	345	280	107																																																			
PEP40/32G	45	40	65	125	526	200	250	65	14	110	125	95	345	280	14								105																																		
PEP50/13	132					160	240						190	35																																											
PEP50/16	160					180	265						212	39																																											
PEP50/20	180					225	320						250	49																																											
PEP50/26(H)	200					250	345						280	68																																											
PEP50/26G	180					225	320						250	65																																											
PEP50/32(H)	225					280	345						280	113																																											
PEP50/32G	45					50	65						125	526									225	280	18	18	125	95	345	280	14								105																		
PEP65/13	25					65	80						100	360									160	180	65	14	100	100	70	280	212	14								41																	
PEP65/16																							160	200						280	212									47																	
PEP65/20(H)		465	180	320	250			55																																																	
PEP65/20G		465	180	320	250			60																																																	
PEP65/26		470	200	360	280			87																																																	
PEP65/32(H)		225	280	400	315			110																																																	
PEP65/32G		45	525	225	280			18																																																	
PEP80/16		25	80	100	125			360	180	225	65	14			110	125	95	320	250	14																					53																
PEP80/20		180							250	345								280	76																																						
PEP80/26		470							200	400								315	95																																						
PEP80/32(H)	526	250				315	80		16																																																
PEP80/32G	526	250				315	80		16																																																
PEP80/40	45	530				280	355		83	18																																															
PEP100/16	35	100				125	140		470	200			250	80				16	160						120	400	360	280	18										87																		
PEP100/20	225									280			400														315	84																													
PEP100/32	250									315			400														315	102																													
PEP100/40	45									530			280														355	100											20		200	150	500	400	23	370	42	110	45	12	176						
PEP125/20	35		125	150	160			470		250	315	80	16		160	120	400			315	18	18																		112																	
PEP125/26	250									355	400									315	117																																				
PEP125/32	45									530	280									355	18																			18	500	400	370	42	110	45	12	155									
PEP125/40	55									670	355									450	25																			25	550	450	500	48	110	51	14	300									
PEP150/20	35									150	200									180	500																			280	400	100	18	200	150	450	315	23	23								132
PEP150/26	250																																							355	400						315	163									
PEP150/32	45	530				280	400		170					170				550	450						370	42			110			45	12	207																							
PEP150/40	55	670				375	500		22					22				500	48						500	48			110			51	14	330																							
PEP200/26	45	200				250	180		555					315				450	120						20	220			170			600	480	28	28																						219
PEP200/32	670													315				480															120	20																							250
PEP200/40	55		720	425	560			100				22	140	200	150	660	560	23				19	515	60			140	64		18	450																										
PEP250/50	65		200	250	200			720				425	560	100	22	140	200	150				660	560	23			19	515		60	140		64	18					450																		
PEP250/32	55		250	300	220			691				355	520	150	26	110	250	200				660	510	28			14	525		48	110		51	14					366																		
PEP250/40								682				400	560	150	26	110	250	200				660	510	28			14	516		48	110		51	14					396																		
PEP250/50								65		250	300	250	720	450	670	120	32	140		240	190	750	650	23			19	515		60	140		64	18					550																		
PEP300/40								65		300	350	300	720	425	670	120	30	140		250	190	760	660	30			19	515		60	140		64	18					550																		

HYDRAULIC PERFORMANCE CURVE END SUCTION PUMP



Performance to ISO9906 Grade for clean cold water only

PRAKASH

Office in India

PRAKASH PUMP

Survey No. 479, Opp. Supreme Estate-1, Zak Kadadara Road, Vill. - Kadadara,
Tal. Dahegam, Gandhinagar, Gujarat 382305 INDIA E-mail: sale@prakashpump.com

Distributor Office for Middle East

PRAKASH PUMP EST

P.O. Box: 20973 Industrial Area Al Ain (United Arab Emirates)
Tel.: +971 3 7222733 Mob.: +971 50 6731283 E-mail: sale@prakashpump.com

Distributor Office for Oman

GLOBAL EQUIPMENT MATERIAL CO. LLC

P.O. Box. 227, Postal Code: 320 Nakhal Road, Barka (Sultanate of Oman)
Tel.: +968 26883982 Mob.: +968 94584686 E-mail: oman@prakashpump.com

Distributor Office for Saudi Arabia

PRAKASH PUMP INDUSTRY

P.O. Box 14327, Bldg. 3616, Al Marwah 6447, Al Mishael Riyadh City, (Kingdoms of Saudi Arabia)
Sulay Exit 18. Mobile: +966 539811109 Email: saudi@prakashpump.com

Factory Address

PANJI ENGINEERING PVT LTD

Survey No. 479, Opp. Supreme Estate-1, Zak Kadadara Road, Vill. - Kadadara,
Tal. Dahegam, Gandhinagar, Gujarat 382305 INDIA E-mail: sale@prakashpump.com



To get
Quotation by email



PRAKASHPUMPEST

These images given are only for illustration purpose
for further details contact the sales team at
sale@prakashpump.com / oman@prakashpump.com
/ saudi@prakashpump.com



To get
Website

